



BRYN MAWR BUGLE

Published by the Bryn Mawr Neighborhood Association

June 2024

Pedal to Petals Returns!

Saturday, June 15th at 2 PM

Join the Bryn Mawr Garden Committee and the Bryn Mawr Active Transportation Committee for a bike tour of Bryn Mawr's public gardens. Bike with your neighbors on Saturday, June 15th at 2 PM for a neighborhood ride with ten stops. At each stop, a gardener will give a brief explanation of the garden and will field questions from riders. Meet at the Garden of Hope and Healing outside of Bryn Mawr Presbyterian Church and finish at Utepils. This ride is all-inclusive and no drop. To RSVP, fill out the form at this link: forms.gle/KM3fLocaXz1trEKp9 and check out our event page on the BMNA website: bmna.org/event/pedal-to-petals/ for more information. The event is free to join, but donations are encouraged.



its second group ride of the year where we visited the Walker Art Fair and Nico's Tacos. Bikers from the committee were joined by new neighbors and friends from Wirth on the Woods, Golden Valley, and even Saint Paul! After meandering through the Chain of Lakes, we perused food trucks and artist booths, and ultimately ended with tasty tacos and margaritas.

Gear up for more Active Transportation events each month and stay tuned by following @activetransit.brynmawr on Instagram or send us an email at activetransit-brynmawr@googlegroups.com to learn more.



1. Downtown Gardens
2. Laurel Triangle
3. Newton Triangle
4. Bryn Mawr Meadows
5. Penn Ave Hedge
6. Upton Ave Garden
7. Cedar Lake Pkwy Garden
8. JD Rivers' Children's Garden
9. Utepils Brewing



Additionally, May's ride was a success! Last month, the Active Transportation Committee hosted

Blood Drive June 14th

Our next BMNA sponsored Red Cross blood drive is scheduled for June 14th. The blood drive is at Bryn Mawr Presbyterian Church. Please register to donate at redcross.org



Shout-out to Helpers at the Upton Garden

As North Wayzata Boulevard elbows into Cedar Lake Parkway, just past the new Wirth on the Woods and Penhurst developments, a lovely and prominent triangle garden welcomes you formally into "North Bryn Mawr". As a motorist and cyclist, I've found it has a calming effect on me, switching me effectively from anxious frontage road mode to neighborhood cruise mode. As a frequent visitor with my family as well on neighborhood walks, it's a natural resting spot to peruse the books in the little library or play a quick game of hide and seek.

Behind the scenes of this garden are a team of volunteers led by Cathy Skalicky, who keep the plants and weeds in shape. On May 18th, the crew was at it again, spreading a full truckload of mulch across the site in under an hour (yes, friends, that is indeed a mulch-spreading record). Thank you to the 20 volunteers who joined in!



Save the Date! BMNA Ice Cream Social Thursday, July 25th

Have ice cream for dinner and dance to the music performed by Chicky Rooster. Area 6 resident, Deacon Warner is a member of this fantastic band.



GET 2 MONTHS RENT FREE!

PLUS, for a limited time, pick a **BONUS THANK YOU GIFT** to fit your interests & active lifestyle!



GIFT 1

Golf at Theodore Wirth Golf Course



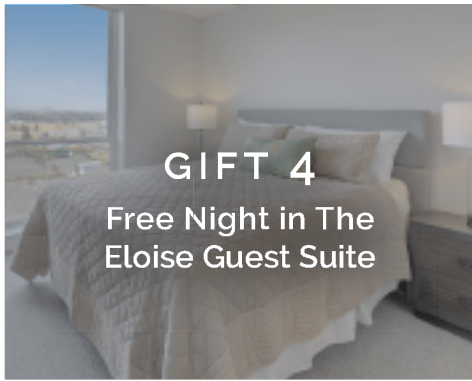
GIFT 2

Dinner at La Mesa



GIFT 3

Tickets to a MN Twins Game



GIFT 4

Free Night in The Eloise Guest Suite

LUXURY 55+ LIVING IN BRYN MAWR!

- Patio or balconies in all units
- Pet-friendly
- Guest suite
- Fitness & yoga studio
- Golf simulator
- Club rooms & rooftop sky lounge
- Greenhouse, courtyard, grill, fire pit, and pond
- Pathways to Theodore Wirth Park



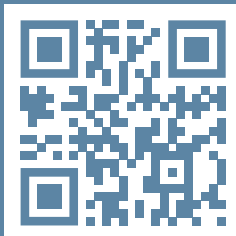
SCHEDULE A TOUR & FOLLOW US ON FACEBOOK TO LEARN ABOUT OUR UPCOMING EVENTS
TheEloiseApts.com | 612-482-9076



CONTACT US TO LEARN MORE
2850 N Wayzata Blvd. | Minneapolis, MN

TheEloiseApts.com | TheEloise@ecumen.org 

AN **ECUMEN** MANAGED LIVING SPACE Copyright © 2023. Ecumen. All rights reserved.





BMNA Reporter

BRYN MAWR NEIGHBORHOOD ASSOCIATION

Annual Meeting

Wednesday, May 8, 2024

6:40 PM

In Attendance:

Board and Staff

- Kate Knuth - President
- Brian Treece - Vice President
- Jessica Wiley - Secretary
- Roberta Jordan - Treasurer
- Liv Nielsen - Area 1 Co-Rep
- Sue Verrett - Area 2 Co-Rep
- Addie Arnold - Area 2 Co-Rep
- Allison Fruen Batzli - Area 3 Co-Rep
- Mark Henry - Area 3 Co-Rep
- Beth Franzen - Area 4 Co-Rep
- Joshua Nichols - Area 4 Co-Rep
- Colleen Dhennin - Area 5 Co-Rep
- Beth Turnbull - Area 5 Co-Rep
- Barry Schade - Area 6 Emeritus
- Drew Quirk - Area 6 Co-Rep
- Haven Stephens - Area 6 Co-Rep
- Stephen Harvey - Area 7 Co-Rep
- Lynda Shaheen - Communication/Development Coordinator
- Jo Elyn Jolstad - Bugle Editor

Guests

- 42 Neighbors
- Katie Cashman - Minneapolis City Councilperson
- Adriana Cerrillo - Minneapolis Public Schools Board Member
- Elizabeth Shaffer - Minneapolis Park Board Member
- Shannon McDonough - Minneapolis Police Department Community Safety Officer
- Lieutenant Richard Hand - Minneapolis Police Department

Call to Order at 6:40 PM by President Kate Knuth

State of the Neighborhood Remarks- Kate Knuth welcomed all to our 2024 Annual Meeting. Knuth reviewed the success of our programs and events during the past year, including SpringFest, the Festival of Garage Sales, and a series of monthly events sponsored by various BMNA committees. She congratulated the Board and neighbors for keeping traditions going. Knuth welcomed Minneapolis Police Department representatives Shannon McDonough, Crime Prevention Specialist, and Lieutenant Richard Hand. Acknowledged how happy the Board is to have growth in Bryn Mawr and welcomed those from new Areas 8 and 9.

Introduction of Elected Officials in Attendance with Brief Remarks

Katie Cashman, City Council Member
Working on economic revitalization; focusing on downtown vacant storefronts being used as pop-ups by small business owners. Public safety is focused on the Department of Human Rights settlement. Cashman is Chair of the Environmental Climate and Infrastructure Committee. They have a \$10 million grant. Working towards zero waste. Transportation/metro transit has increased routes and improved safety minneapolismn.gov/government/city-council/ward-7/.

Adriana Cerrillo, MPS School Board Member
Cerrillo has been working to provide culturally responsive services in public education. \$107 million dollar cut looming for MPS. Asks all to pay attention, as public schools are important to the community. Can be

contacted at board.mpls.k12.mn.us/cerrillo.
Elizabeth Shaffer, Park Board
Looking forward to collaboration of Watershed District, Park Board and City. Discussed improvements at Eloise Butler, Wirth Park, and the Meadows.

Presentation of Slate of Candidates for 2024 Board Vacancies - Brian Treece

- President: Brian Treece
- Vice President: Addie Arnold
- Secretary: Jessica Wiley
- Treasurer: Karen Soderberg
- Area 2: Sue Verrett
- Area 4: Joshua Nichols. Beth Franzen, Alec Werning
- Area 6: Haven Stephens, Drew Quirk
- Area 9: Ms. Doris Evans, Michael Scott, Carol Chapman

Nominations were solicited from the floor. With no opposition, the slate

was approved by acclamation. Brian thanked all those who have served on the board - Karen Frederickson, Roberta Jordan, Kate Knuth, and Lindsey Lyrenmann, and welcomed our five new board members.

Door Prize Drawings - Lynda Shaheen
Closing Remarks
Meeting Adjourned at 7:30 PM
NEXT Monthly BOARD MEETING:
Wednesday June 11, 2022

The BMNA invites and encourages participation by every resident to each program, service and event organized by the BMNA. Should you require an accommodation in order for you to fully participate, or if you require this document in a different format, please let us know by contacting our neighborhood coordinator at organizer@BMNA.org at least five days before our event.

Kate's Kanine Kamp




Boarding, Walks, Day Care, Big Fun!

Kate Hurley
(612) 377-7240
Schedule a Meet & Greet
Bryn Mawr Location
References Available

**Rasmusson
Cleaning Service
L.L.C.**

**Airbnb
Commercial
Residential**



218-451-8413
www.rasmussoncleaning.com
"Don't Fuss, Call Us"

FURTHER

performance

VW • AUDI • EURO • CLASSIC

MAINTENANCE

RESTORATION

PERFORMANCE

NEW LOCATION

305 THOMAS AVEN., MINNEAPOLIS

612-374-2604

FPTUNED.COM

DWI

CRIMINAL DEFENSE


24 HOUR HELP

• TESTING ADVICE • BAIL • JAIL RELEASE •

- DETOX RELEASE
- DRUGS

OVER 30 YEARS
EXPERIENCE

SUPER LAWYER
2006 through 2016



GERALD MILLER, P.A.
LAWYER

VISA MasterCard DISCOVER AMEX

FREE INITIAL CONSULTATION

612-341-9080



Recycling

www.ci.minneapolis.mn.us/
solid-waste
(612) 673-2917

Bryn Mawr Recycling Schedule

	Monday	Tuesday
Area 1	June 3 June 17	
Areas 4W, 5W, 6, 7	June 10 June 24	
Areas 2, 3, 4E, 5E		June 11 June 25

Use it up, wear it out, make it do, do without. Recycle.

Your wedding dance, holiday party or event can be the very BEST!
LIVE music is more FUN!

www.perculatorsband.com
Click, call, come see us LIVE! We'll rock your socks off!
Hans Gasterland, drums. Call today: 612-723-5038

JAY WILLIAMS, D.D.S.

612-377-3740

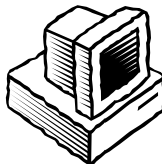
2218 LAUREL AVENUE • MINNEAPOLIS, MN 55405

Be part of the Bugle!

BUGLE NOTES • FASCINATING FOLKS

- PHOTO FEATURE • OUT & ABOUT
- YOUTH & SCHOOLS • PARKS
- ENVIRONMENT • GARDENS

Email your neighbor news to bugle@bmna.org or drop it in the Bugle Box at the Bryn Mawr Market.
For Advertising, Email advertising@bmna.org



From the Editor

The end of the school year is coming soon and with it the conclusion of Community Education after school programs. Many sites do end of session performances and celebrations. This year, in addition to my regular full-time job, I produced and costumed two elementary musicals. They both performed on the same two days in the middle of May (*Frozen Kids* at Loring Elementary and *Lion King Kids* at Pillsbury Elementary). It was the first time either school has done a show and both were completely adorable.

Last week, representatives from all our elementary, middle and high school sites came together for Youth Service Day. Our central office team planned transportation, lunch and a full day of activities for 250 youth.

As if that wasn't enough, I was also creating costumes for *Annie Jr.* at Anwatin Middle School in preparation for their performances on May 31 and June 1. By the time this *Bugle* is in your hands, those dates will have passed. But I sincerely hope that many Bryn Mawr neighbors show up to support the return of this valuable program. With all this going on, watching the Timberwolves in the playoffs has definitely been hard on the blood pressure!

People ask me, how my theatre journey began. Like so many, I was in

theatre in high school. I did *Anything Goes*, *The Emperor's Nightingale* and *Oklahoma*. While in college, I did a few summers of Community theatre in Chatfield (*Oklahoma*, *Sound of Music*, *Carousel*). After that, I left theatre in the past and thought I would never look back.

Marriage and kids happened and in 2002, I took my then 5th grade daughter to see neighbor Joe Heily perform in *The Music Man* at Anwatin. She loved it of course and the following year, she joined in on the fun. The show was *Joseph and the Amazing Technicolor Dream Coat*. The costume designer was looking for someone to make the iconic coat and I volunteered. The next year, Project Success asked me if I would do the costumes for their musical. I said yes, and I have been doing their shows ever since. I went on become a producer and rehearsals for *Little Mermaid* at Southwest High School start Tuesday.

Suffice it to say, it spring has been extremely busy. So, what's next? A restful holiday weekend? Nope. I am packing and preparing to head to New York for our daughter's wedding. It will feel so good to check "finish the *Bugle* one week early" off my very long to-do list. Onward to Summer!

- JoEllyn Jolstad, editor@bmna.org

NORTH END HARDWARE

Exceptional Service

Have a job? We have a Tool.

Northend Rental Just Rent It!

NORTH END HARDWARE & RENTAL
at PENN and LOWRY
Hours: M-F, 7 a.m.-6:30 p.m.; Sat, 7 a.m.-5 p.m.
Darryl Weivoda, Owner

612-529-9151 • Northendhdwr@aol.com



Out & About

Kumbayah the Juneteenth Story

Play

Minnesota Humanities Center and Northrop are proud to bring Kumbayah the Juneteenth Story to the Twin Cities in collaboration with Sweet Potato Comfort Pie and local organizations. In 2021, Juneteenth was written into law as a national day of observance. Following, on February 3rd, 2023, Juneteenth became an official state holiday in Minnesota. Although awareness has grown, many people are still unfamiliar with why we celebrate Juneteenth and the insight it offers in addressing current social injustice.

Kumbayah the Juneteenth Story, written by Rose McGee, is a two-act play that addresses a factual and traumatic time in our history—when Black people could no longer be enslaved in this country. Storytelling and music weave together mesmerizing scenes.

We invite you to view the play to gain a deeper understanding of Juneteenth history. Free tickets at tickets.umn.edu/northrop

Work Continues on Sumner Library Renovation Project

Noticeable progress has been made on the Sumner Library renovation project since the last update. Recent work highlights include:

- Wall framing completed; drywall in progress
- Spray insulation added to ceiling above new study rooms where vermiculite was removed
- Window restoration in historic portions of building continues, with many units already restored
- Installation of new fire sprinkler system for the main level in progress
- Adaptation of existing wood shelves to work with new shelving system
- Installation of magnet board in teen area

Framing of new wellness room completed

Upcoming Work

As we move further into spring, exterior work will begin, including masonry repairs and roof replacement.

Project Updates

Construction is projected to finish in fall 2024 with an anticipated reopening soon after. Interested in receiving future updates on the project? Subscribe to the Sumner Library updates email list or visit the Sumner Library refurbishment project page at HCLib.org.

Minneapolis will Celebrate National Night Out Aug. 6

National Night Out is a time for City residents to come together and celebrate with neighbors. Many blocks in Minneapolis take this opportunity to reconnect, eat and build relationships while kids play and bike freely on a closed street. Our goal this year is to increase participation.

Register your event by July 30

Registration is now open, and it's free. Sign up early. Registration closes July 30, five days before the event.



Some points to consider:

- Register only one event per block, so confirm with your neighbors who will be registering.
- Consider whether you want your street blocked off to traffic.
- Ask neighbors for help organizing your event.
- Call 311 to request a fire truck, MPD K9, and/or MPD Mounted Patrol.
- Register your block event at the City of Minneapolis website.

Contact our City crime prevention specialist, Shannon McDonough with questions 612.398.4707, or email shannon.mcdonough@minneapolismn.gov

Pup of the Month

By Carter Casmaer

Welcome to 'Pup of the Month', where we showcase Bryn Mawr's goodest dogs! This month we'd like to introduce Griffen, a four year old English Setter who hails from South Carolina. Griffen is, first and foremost, a gentleman and a scholar. His formative years in the 'Palmetto State' were spent essentially as a free range pup. In those days he followed his heart, and his snoot, into parts unknown to us city dwellers. But alas change is the only constant and eventually Griffen fell into the care of 'Above and Beyond English Setter Rescue' and over time gravitated to a loving home here in Bryn Mawr. Griffen enjoys roaming his backyard gardens and contemplating the wildlife therein. His time here is measured in weeks and he is, naturally, learning the sights, sounds and smells of his new surroundings. He is thoughtful,



affectionate and has a peaceful soul. He loves to curl up with his human and he is also rumored to be very soft. However do not be fooled as Griffen is also a silly boy and if given the chance enjoys wrestling with fellow pups. We all know that as a newcomer to Minnesota it can be tough to make friends so let's all be sure to give Griffen a warm welcome to the neighborhood!

If you'd like to submit an outstanding pup to be recognized please don't hesitate to contact brynmawrpupofthemonth@gmail.com.

Window Washing

Window washing, inside and out!
"You'll see the difference!"

Call Larry
651-635-9228

20/20 Cleaning Family Owned & operated for more than 20 years
<https://www.2020cleaningspecialists.com>

We appreciate your support by shopping at Bryn Mawr Market!

Did you know we sell...

- Bogart's Donuts (Mon, Weds, Fri, & Sat)
- Baba's & Holy Land Hummus
- Baker's Field Bread and Flours (Weds & Sun delivery)
- Breadsmith (Tues & Fri delivery)
- Bench Pressed greeting cards (and stamps)
- Organic Dairy & Produce
 - Milk, butter, eggs, cheese, cilantro, parsley, ginger, cucumbers, tomatoes, greens, oranges, lemons, limes, Fair Trade bananas, and more

We continue to carry:

- Milk alternatives
- Kombucha
- Ice cream
- That random thing you forgot to buy

We are still open 365 days a year!
Mon - Fri
7am - 8pm,
Sat - Sun
8am - 9pm

Ilan Weiss
REALTOR
612-513-5714

ilanweiss@edinarealty.com
ilanweiss.edinarealty.com

Visit [BMNA.ORG](http://www.bmna.org) for a link to membership information.
<http://www.bmna.org/bmna/membership.html>

Join the Earth Dance Farm Community Shared Agriculture (CSA)! Year round vegetable and egg shares available, pick up at Bryn Mawr Market! Sign up at earthdancefarm.net

412 Cedar Lake Rd, Minneapolis



Elections 2024

This is the second article in the League of Women Voters Minneapolis 2024 Democracy Series. All articles will be available at lwvmpls.org/for-voters

We Are Secure In Our Votes. That Makes MN #1!

As Minnesotans we understand that exercising our right to vote is fundamental to a healthy democracy. In the 2020 National election, MN was #1 in turnout with just under 80% of eligible voters casting their ballots. Minnesota implements best practices for increasing voter turnout through Accessibility, Security, and Accuracy. Let's look at key features of Minnesota voting laws that help increase our citizens' trust and participation while ensuring the integrity of our elections.

Accessibility

Minnesota historically has made it easy to register. In 1974 we became the second state in the nation to allow for same day registration (Star Tribune, October 14, 2022). You can register to vote online with your mobile phone or computer. The LWV sponsors registration events where you can also register using a paper application. Paper applications can be printed from the Secretary of State's office or call 311 to request one by mail. And more recently, Minnesota has passed legislation to make

registration even easier with Automatic Voter Registration (AVR) at the time you apply for or renew your driver license or when you interact with other state agencies like MNCare, or Human Services.

Voter security is part of voter registration regardless of the method used. To register on line, you need to provide your address along with your driver's license number, State ID information card number, or the last four digits of your social security number. This information is sent to election officials to create a new voter record or to update your existing registration. All data is verified using state and federal databases. If you do not have these identification numbers, you can still register to vote using the paper form—election officials will still verify your eligibility to vote.

Our large voter turnout is a result of how easy it is for citizens to vote. You have the option to vote by mail using an absentee ballot. Absentee ballots are only available to MN voters who complete and return an application to their local election official. Your eligibility is confirmed using state and federal databases to verify information provided before ballots are mailed to the voter. Only 1 absentee ballot is ever mailed. Additionally, as of June 1, 2024, you can apply for a permanent absentee ballot, eliminating the need to apply for each election cycle.

Election day is not just a Tuesday in November but extends over 46 days. This is true for city, primary and general elections. For the 2024 general

election you can vote early at your local election office from Friday, September 20 to Monday, November 4. You do this by completing your absentee ballot at your local election office instead of mailing it. After completing your ballot, you put it into a secure box. The process to count absentee ballots begins 18 days before the election.

Whether you submit your absentee ballot by mail or in person, you will need to provide

your name, address, driver's license number, State ID card number or last 4 digits of your social security number. This information is used to make sure your registration to vote is valid. If you do not have these identification numbers, you can still apply for an absentee ballot using the paper form—election officials will still verify your voter registration. No ballot is counted until it has been verified by the members of the Absentee Ballot Board. Each ballot is given a unique barcode and is entered into the state's voter registration system. This allows you to track the status of your absentee ballot at the Secretary of State's website. The barcode allows officials to identify that you voted by absentee ballot ensuring that you will not be able to vote in another way.

If you need assistance to vote you can bring someone with you to help or get assistance from election judges. You can access a machine that can mark a ballot for you if you are unable to do this on your own. And if you cannot easily leave your vehicle you can have a ballot brought out to you. Curbside voting is monitored by two election judges from different parties. They bring you the ballot, return it to the polling place and put in the ballot counter. If you make a mistake, no worries. You have a right to a replacement ballot; just return the spoiled ballot to the election judge and this judge will give you a new ballot. For more information on different ways to vote go to the Elections and Voting at the Secretary of State's website and click on "Other ways to vote" for the full list of voting options.

Security

What happens to your ballot after you vote? MN uses ballot counting machines to tabulate the votes. If you voted with an absentee ballot it is processed by the state's Absentee Ballot Board. They are kept in secured storage until 18 days before the election. Then the ballots are opened and reviewed by a team of two board members from different parties. Teams of two board members from different parties process these ballots using the same type of counting machines used to count in-person ballots on election day.

What happens to your paper ballot after it is counted? These ballots are placed in ballot transfer cases and sealed with two certification seals. All of this is done by two election judges (one must be either the head election judge or the assistant head election judge) who sign forms throughout the process. The sealed ballot boxes are transferred to Hen-

nepin County Elections and stored for 22 months.

Accuracy

How is the process of counting votes secure so you can be confident that your vote will be

counted? Paper ballots are the cornerstone of ballot security in Minnesota. They provide a record of everyone's vote and facilitate any post-election audits to verify accuracy of ballot counting machines if needed. Your paper ballot is tabulated using a ballot counting machine. Research comparing the accuracy between hand counting votes and counting machines shows that using machines is more accurate and faster than hand counting.

You can be confident that these ballot counting machines are functioning accurately on election day. Testing is done before and after elections to certify the accuracy of these machines. The machines purchased for use in Minnesota to count your vote have been tested for accuracy and certified by test labs approved by the U. S. Election Assistance Commission. The machines also go through additional testing by the office of the Secretary of State before the election and again by local officials where the public are invited to watch the testing process.

After the election, counties randomly select precincts where election results are audited. Hand counts of paper ballots are compared to machine counts. These audits are also open to the public.

Concluding Remarks

Many layers of protection exist to ensure voting integrity from the moment you register, to the way you vote, and to counting and certifying your vote.

Voting in Minnesota is secure due to a comprehensive system of safeguards and protocols designed to protect the integrity of the electoral process. From stringent registration requirements and accessible absentee balloting to transparent ballot counting procedures and post-election audits, Minnesota implements multiple layers of protection at every stage of the voting process. These measures ensure only eligible voters cast their ballots and every vote is accurately recorded and counted. In addition, the state's commitment to accessibility and inclusivity ensures that all citizens, regardless of their circumstances or abilities, can participate in the democratic process with confidence. Overall, Minnesota's robust security measures and dedication to fairness make voting trusted and secure.

Next month the third article in our League of Women Voter Minneapolis 2024 Democracy Series, "AI and How it Can Impact Elections" will describe the role artificial intelligence may play in our elections.

Additional Resource

Check out this video to see a summary of key ideas from this article: <https://vimeo.com/754039249/dc89970c0c>

Community Education
YOUTH & ADULT PROGRAMS

SUPER SUMMER
2024 Youth Programming

Henry/Camden • Justice Page • Kenwood • Sanford • Southwest

June 24-August 8
Registration at mpscommunityed.com



Bugle Notes

Area 2

Lasse Corson (now Area 2, formerly Area 6), son of Ross and Yukiko Corson, was selected to participate this summer as a pianist in the 2024 Betty Carter's Jazz Ahead program at the Kennedy Center for Performing Arts in Washington, DC.

Under the direction of Jason Moran, Kennedy Center Artistic Director for Jazz, Jazz Ahead is an international two-week residency performance and composition program discovering and presenting the next generation of jazz greats. Each year 16 young jazz artists from around the world are invited to participate in the tuition-free program.

Lasse attended Bryn Mawr Elementary and Anwatin Middle School (interrupted by a few years in Flori-



da), and he graduated from Southwest High School. He has just completed his junior year at William Paterson University in New Jersey, where he studies jazz piano and sound engineering arts. He has taught at MacPhail Center for Music and performed at many local music venues, including the Twin Cities Jazz Festival.

JIM TOLLEFSRUD
PIANO TUNING & REPAIR

1612 | 377-8345 608 South Cedar Lake Road
Minneapolis, Minnesota 55405



Good neighbors make the difference

Being a good neighbor means being there for my community. As your local State Farm® agent, I'm ready to help whenever you need me. Give me a call.

We Actively Support Our LGBTQ, BIPOC, and Latino Neighbors. Minnesota Strong We Stand Together!

Steph Swanson
Agent
1422 W Lake St Ste 216
Minneapolis, MN 55408-2616
Bus: 612-721-2248
www.stephswanson.com
steph@stephswanson.com



Se habla español.

State Farm
Bloomington, IL



Visit **BMNA.ORG** for a link to membership information.
<http://www.bmna.org/bmna/membership.html>

Your local Montessori school is hiring!

Have you ever wanted to work with infants and toddlers in a Montessori school? Interested in Montessori philosophy or simply excited about witnessing little ones learn about life? We are thrilled to announce that we are growing our team! Ideal candidates are open to working with folks of all backgrounds, enjoy spending time with children, and are team-players. Hourly rate starts at \$20 an hour with regular opportunities to increase.

Not wanting to take a regular position? How does rocking adorable babies, watering plants, or folding laundry sound? We are also looking for volunteers!

**300 Cedar Lake Road South
(across from La Mesa)**

**Please submit inquiries to:
info@sweetpeamontessori.org**





BMNA

Annual Meeting

The 2024 Annual Meeting and Potluck was a big success. We had over 60 neighbors and guests attend, and in Bryn Mawr style, the side dishes were delicious. A heartfelt thank you to all who attended on May 8.

The Annual Meeting is a time when we elect new BMNA Board members, hear from our elected rep-



resentatives and other officials, review our programs and activities for the past year, and hear from neighbors about their priorities. This year we welcomed new Board members Karen Soderberg (Treasurer), Alec Werning (Area 6), Ms. Doris Evans (Area 9), Michael Scott (Area 9), and Carol Chapman (Area 9).

We are thankful and proud that the BMNA consistently attracts new people to the Board and committees. Another sign of a healthy Board is a mix of new volunteers and those with experience. We re-elected Board members Brian Treece (President), Addie Arnold (Vice President), Jessica Wiley (Secretary), Sue Verrett (Area 2), Joshua Nichols (Area 4), Beth Franzen (Area 4), Haven Stephens (Area 6), and Drew Quirk (Area 6).

We heard from our new City Councilperson Katie Cashman, School Board Member Adriana Cerrillo, and Park Board Representative Elizabeth Shaffer.

BMNA President Kate Knuth gave an overview of the past year including a very successful SpringFest, the Festival of Garage Sales, and a series of monthly events sponsored by various BMNA committees. Kate shared the Boards' excitement that Bryn Mawr has grown with the addition of new developments at Wirth-on-the-Woods and Penhurst. We have created two new areas (8 and 9) to give them a voice in the BMNA and elected three new Board members from Area 9,

Those in attendance were able to give input about neighbor priorities through our yearly feedback process. We will also gather input from those who couldn't attend with a summer survey. Feedback will be shared in a future article.


But let's not forget about the fun stuff! Neighbors brought delicious dishes for a wonderful potluck. Pizza from Bryn Mawr Pizza and Deli and a curry side dish from Pimento Jamaican Kitchen were purchased by



the BMNA. There was plenty of time for socializing; we drew for door prizes donated by neighbors and our wonderful local businesses, with a grand prize drawing from Blue Spruce Eco-Friendly Cleaning.

Our next monthly meeting is Wednesday, June 11, 6:30 PM, at Bryn Mawr Presbyterian Church.

- Jessica Wiley, Area 3



Area 4 Bugle Block Distributor Needed!

Russell between Laurel and Cedar Lake Rd and around the block to Sheridan (14 households)

The Bugle is delivered to every household each month by volunteer neighbors. The person who has been doing this route for many years, has stepped down. If you are willing able to take it over, please email bugle@bmna.org and we will connect you with the Area 4 distributor.



Bryn Mawr Neighborhood Association Calendar - June 2024

All meetings are open - everyone is welcome. Neighbors are urged to attend and participate in meetings and activities of special interest to them. Meetings are held at Bryn Mawr Presbyterian Church during the school year, unless otherwise noted.

Sunday	Monday	Tuesday	Wednesday	Thursday	Friday	Saturday
						1
 <p>Save the date! The 2024 BMNA Ice Cream Social Thursday, July 25th</p>						
2	3	4	5	6	7	8
9	Garden Committee Meeting, 7-8:30pm 2915 Wayzata Ave S, Questions? Email gardens@bmna.org	11	BMNA Monthly meeting 6:30pm Bryn Mawr Church, 6:30pm & Google Meet. Joining link posted on BMNA.org .	13	Blood Drive 12-6pm Bryn Mawr Church. Register at RedCrossBlood.org	15
16	17	18	Juneteenth	19	Submissions due for next <i>Bugle</i> . Drop in the Bugle Box at the Market or email bugle@bmna.org	22
23	24	25	26	27	28	29
30	31					

Garage Sale Wrap Up

The morning started wet but it turned into a gorgeous day. We had 90 neighbors register their garage sales. The registration fee paid for portable toilets and printing costs. Sadly, 2 of the food trucks we had scheduled had to cancel because their trucks were being repaired. We hope you made some money or found that one of kind treasure.



The Amazing COW Boat PUPPET SHOW

Theater in your neighborhood!

Join us for Open Eye Theatre's Driveway Tour Puppet Show!

Time for Charlie to take a bath! Charlie's imagination comes alive as he pretends he is the captain of a boat that is part cow, part boat, and totally amazing! Together Charlie and his Cow Boat set sail on a high seas adventure, making friends as they go, all before sailing home to his bathtub before bed time!

Directed by Steve Ackerman
Performed by Meg Allen & Zachary Hodgkins
With music by Dan Turpening & Spencer Chandler

Date & Time:
Sunday, July 28th at 4:00pm
Rain or Shine

Location:
Sweet Pea Montessori
300 Cedar Lake Road South

Instructions:
BYOS: Bring Your Own Seating!
We will have a few blankets available for use



Gardens

We made it gardeners - prime time! As my theater-nerd wife likes to sing, "June is bustin' out all over" (Carousel - YouTube it), and we are now overflowing with greenery. With species both wanted and unwanted, it's just uplifting to see so much life and color across the neighborhood! Finally, the rabbits can't keep up and our borders are filling in. Our perennial friends are popping up everywhere ("where did that Fern come from?!?"), hanging baskets and planters are multiplying, and lawn mowers are heard in the distance (yes, it's OKAY to mow in May, just take it easy). With frequent soakings from above, we have been relatively off-the-hook for watering duties, so let's enjoy it!

Introducing Rattlesnake Master

Beyond the fabulous common name, this Minnesota native forb deserves a place in your garden for its uncommon style which is more suggestive of a southwestern desert rather than midwestern grassland. It is increasingly valued by gardeners for its highly ornamental appearance and how it attracts myriad pollinators. It can be spotted this summer in our wonderful Eloise Butler Wildflower Garden.

European settlers called it rattlesnake master (*Eryngium yuccifolium*) mistakenly believing Native Americans used it as an antidote for rattlesnake venom poisoning. Its nectar was used, however, for other medicinal purposes and its fibers found in ancient shoe and basket construction of midwestern Native American peoples.



The species name *yuccifolium* was given because its leaves resemble those of yucca plants - fibrous and spear-like with barbs or spines. Leaves are bluish-green and covered with a waxy coating. A mature plant reaches 4 feet with usually only one or two flowering stalks. Flowers are produced in July and August but can be left in the garden for winter interest.

It's a member of the carrot family which have dainty flowers arranged in umbels; an umbel is a cluster of flowers that consists in a number of short flower stalks that spread from a common point like umbrella ribs. These can be flat-topped like fennel and queen anne's lace, or spherical like allium and rattlesnake master.

The flowers attract butterflies, bees, and beetles, but the majority of visitors are wasps that feed on the nectar. In Minnesota author and pollinator conservationist Heather Holm's fantas-

tic book *Pollinators of Native Plants: Attract, Observe and Identify Pollinators and Beneficial Insects with Native Plants*, she lists eleven types of wasps who visit the flowerheads. While wasps generally get a bad rap, many of those species mentioned are non-aggressive and incredibly beneficial predators of pests such as aphids. In my garden, when I first saw the great black wasp - which I refer to as the "Darth Vader wasp" because they are large and a shiny black - I was alarmed, but they've never shown any interest in me. They go about their waspy business and completely ignore my presence.



Rattlesnake Master does best in full sun with well-drained soil. Once planted, after two years it is best left undisturbed due to the large taproot it develops which helps make it drought-tolerant. It mixes well with liatris (blazingstar), purple cone-flower, black-eyed susan, and native grasses like little bluestem where its round thistle-like flowers are held above long, sturdy stalks. It also adds an excellent architectural element to cut flower arrangements. It can, however, be an aggressive self-seeder, though seedlings are easily identified and shared with gardener friends.

Join us at "Pedal to Petals" on June 15th

As our friends in the Active Transportation Committee have made mention in this Bugle, we're excited to re-introduce, after 12 years of hiatus, the "Pedal to Petals" group bike ride event this June! This family-friendly group bike ride will take a tour through many of the public gardens that are maintained entirely by neighborhood volunteers and funded by our neighborhood association.

Learn about the design and planting strategies that have been used over the years, and also learn about some of our larger neighboring pub-



lic spaces from experts of the Bryn Mawr Meadows project as well as the JD Rivers Children's Garden.

Registration is free, but we do hope the event will raise awareness of our constant need for volunteers and tax-free donations! More info and a sign up form can be found at www.bmna.org/event/pedal-to-petals. We will meet at the Garden of Hope and Healing in front of the Bryn Mawr Presbyterian Church at 2pm, weather permitting. Hope to see you there!

Garden Sponsor Opportunity

Looking to create a meaningful impact in your community? Adopt a garden! With your support, you can ensure that one of the twelve BMNA gardens is thriving and inviting to all!

With limited city funding, we rely on your financial contribution to maintain the beauty of our neighborhood. Your sponsorship of a garden includes:

- Annual mulch to protect the plants and flowers and to keep the gardens looking beautiful
- Access to city water because we all need fresh clean water to stay healthy!
- Plant replacement (affected by weather, pests, or heavy foot traffic)
- TLC from dedicated volunteer gardeners



Your name will be recognized in the Bugle in August and on-site throughout the growing season to acknowledge your valuable contribution to the garden and your BMNA community. Did we mention that your contribution is tax-deductible?

Please help grow your community! Register your family or business to support your neighborhood garden by June 15. From the donation web page: bmna.org/membership-and-donations/ choose the "donate in memory/honor" and type Garden Sponsor in the "in memory or honor of" box. Recommended sponsorship amount is \$200, which covers the cost of basic mulching and watering for a typical garden. Thank you for your support!

Next Garden Committee Meeting

Monday, June 10, 7-8:30pm, at 2915 Wayzata Ave S. Check back at bmna.org/events for the latest info. Join us to talk about community garden work day events, improvement projects, gardening fun and learning activities. Regardless of skill level, we could use your help! And keep an eye out for our signs to join in the fun on any workday.

Have Questions? Want to learn more?

Email gardens@bmna.org. Follow Bryn Mawr Gardens on Facebook Visit us at bmna.org/gardens

- Patti Bobaty (Area 2),
Jess Haverstock (Area 3),
Drew Quirk (Area 6)

GET READY FOR GROWING SEASON



CALL OR TEXT
(952) 913-3007

Send emails to -
HELLO@MOODYLANDMN.COM

SPRING CLEANUP
MULCHING WEEDING
PERENNIAL PLANTING
BOULEVARD GARDENS
NATIVES/WILDFLOWERS
CONTAINERS & MORE!
ASK US ABOUT CHICKEN COOPS

HOW CAN WE HELP?

CALL OR TEXT
(952) 913-3007

YOU COULD HAVE
FRESH EGGS



WWW.MOODYLANDMN.COM
BRYN MAWR, MINNEAPOLIS



Spring Forth into Summer with Nature Activities at Minneapolis Parks

Check out programs for everyone, from preschoolers to adults, in June

Those listed below are FREE unless otherwise noted

Celebrate Summer's Arrival!

Nature Art: Solstice Crowns
Kroening Nature Center in North Mississippi Regional Park
Saturday, June 22, 1:30-2:30 pm

Summer Solstice Celebration
Eloise Butler Wildflower Garden & Bird Sanctuary
Thursday, June 20, 5 to 8 pm
Summer Solstice Forest Bathing
B.F. Nelson Park
Thursday, June 20, 7 to 8:30 pm

Preschoolers

Garden Storytime starts May 2
Eloise Butler Wildflower Garden
Thursdays, 10-10:30 am and Saturdays, 3-3:30 pm
Join a naturalist at the for engaging nature-themed stories and activities. A free, drop-in program for children with their caregivers. Children must be accompanied by an adult.

Coming in July

Preschool Day Camp: Summer Senses at Wirth Pavilion
Wirth Picnic Pavilion: 3275 Greenwood Ave. in Theodore Wirth Regional Park
Monday, July 1 - Wednesday, July 3, 9 am to 12 noon

Explore the sights, sounds, smells, touches, and even tastes of summer at Wirth Park!

School-age Children

Garden to Table Camp
J.D. Rivers' Children's Garden in Theodore Wirth Regional Park
\$150, June 24-27 and July 22-25, 9 am-3 pm
Campers ages 9 to 12 years spend time outdoors and make food with produce straight from the garden. They explore all corners of the garden and make tasty snacks from its produce, while learning how to garden and why it's important.

Daily Garden Tour

Tuesdays through Sundays, 11:00am-11:45am
Eloise Butler Wildflower Garden
Join a naturalist for a drop-in guided walk on the trails. Learn about the plants and history of oldest public wildflower garden in the United States on a 45-minute tour:

Adults 18 & Up


Garden with a Naturalist
J.D. Rivers' Garden in Theodore Wirth Regional Park
\$2.50, Monthly on Tuesdays, May through September, 11am-12 noon
Spend your lunch break getting fresh air, doing some garden chores, and learning something new about produce gardening.



Bryn Mawr Soap

On sale at Bryn Mawr Market and Twin Cities area co-ops

www.brynmawrsoap.com 612-374-3613



June 4, 1997 1 1/2" rain. Garden shooting up. Pinching off early blooms will result in thicker growth and more flowers later. Time to prune spring-flowering shrubs like lilacs, giving them time to reset buds for next year.

June 14, 1997 Three raccoon babies drinking from our backyard sprinkler, while we were nearby. A parent quickly grabbed them one by one and took them to the safety of a wooded area. And one by one they ran back to the sprinkler. Kids these days!

June 16, 1992 An F5 tornado destroyed the small town of Chandler in southwestern Minnesota. Thunderstorms and strong straight line winds here with many trees down.

June 21, 2024 Full moon, the Ojibwe Odelimini Giziz or strawberry moon. This is the summer solstice, the longest day of the year, with 15 hours 37 minutes of sunlight here. The Twin Cities is on the 45th parallel, exactly halfway between the equator and the north pole (look for a boulder with a plaque near the intersection of Golden Valley Rd and Wirth Parkway). On this day the northern hemisphere is maximally tilted toward the sun.



Eloise Butler Wildflower Garden & Bird Sanctuary

Garden Storytime

Thursdays 10-10:30am
May 2 - October 12
Saturdays 3:00 - 3:30pm
May 4 - October 19

Kids' nature stories and activities led by a garden naturalist!

No registration required, meet outside the Visitor Shelter

Minneapolis Park & Recreation Board

SUPPORT THE BMNA!

We have some of the cheapest rates around!
Why don't you advertise in the Bugle?!!

Ad Size	Resident Rate	Non Resident Rate
Full Page	\$260	\$300
Half page	\$135	\$155
Quarter page	\$70	\$80
3-column, 1/4 high	\$50	\$65
Sixth-page	\$50	\$65
Eighth page, horizontal	\$35	\$45
Business Card	\$25	\$30
Inserts	\$145	\$170

(Inserts must be printed by you, double or single-sided.)

Full-Color Now Available!
\$80 full color
In addition to ad placement fee (above)
Call for Details.

Ads are due the 20th of each month and should be camera-ready and paid in advance.
For more information contact Deryck (612-377-8968)
djolstad@msn.com



From the ARCHIVES

Bryn Mawr Church History

By Jim Hooker, Area 5

I've been doing a little Bryn Mawr history research because the Bryn Mawr Presbyterian Church, of which I'm a member, is celebrating its 100th anniversary this year. And in

so doing, I've a little bit I thought might be of broader interest. We'll look a little deeper at these various facilities throughout the coming months, but I think it's fun to see them all in one go.



In 1913, a group of Bryn Mawr Presbyterians worked with the big downtown church, Westminster, and set up the Bryn Mawr Sunday School. They held both classes and a weekly service in the trolley station which was at Laurel and Oliver. At the time, Laurel Avenue ran unbroken all the way downtown, and every 12 minutes (!) a trolley cycled back and forth; Bryn Mawr was the end of the line.



Then in 1919, the Presbytery of Minneapolis thought it was time to scale up and bought an empty lot on Penn Ave and built the Bryn Mawr Chapel, which still stands today relabeled as Big Hill Books.



We held services there until 1942 when the Sanctuary portion of the current building was built. Part of the sanctuary was walled off for an office and classrooms, and the basement had bathrooms, furnace room, kitchen, and dining hall. In this picture the camera is set up in Laurel Ave where Queen Ave abuts it. The door closest to the camera is still there and opens to the Sanctuary - then it went directly to the office. The main front door is visible towards the other end of the building, and it is now the swinging doors which are our main access to the Sanctuary.



In 1954, the wing with the Narthex, offices and Fellowship area was added on, with new upstairs bathrooms and downstairs classrooms. At this time the Sanctuary was expanded by taking down the walls that comprised the office and classrooms.



In 2011, the church was expanded once again, adding an elevator and the More Light Meeting Room, and rearranging all the 1954 addition classrooms and fellowship space. This is the building as we know it today.

Future plans include a spa, helicopter pad, and cigar lounge. Okay, I lied about that last sentence, but the rest is the truth as best I know it.

**1200 Glenwood Ave. N.
Minneapolis, MN**

612-377-4900

www.northwestertire.net

<p>SAVE on TIRES</p>	<p>A/C RE-CHARGE</p> <p>10% OFF</p> <p><small>COUPON Most vehicles. Must present coupon. Cannot be combined with other offers. Plus tax, shop supplies & environmental fees. Expires 7/01/2024.</small></p>	<p>Service Special</p> <p>\$10⁰⁰ OFF Any Service Over \$100</p> <p>\$20⁰⁰ OFF Any Service Over \$200</p> <p>\$50⁰⁰ OFF Any Service Over \$500</p> <p><small>COUPON Most vehicles. Must present coupon. Cannot be combined with other offers. Plus tax, shop supplies & environmental fees. Expires 7/01/2024.</small></p>
<p>SUMMER CAR CARE PACKAGE</p> <p>\$29⁹⁵</p> <p><small>COUPON Most vehicles. Must present coupon. Cannot be combined with other offers. Plus tax, shop supplies & environmental fees. Expires 7/01/2024.</small></p>	<p>OIL CHANGE WITH FREE TIRE ROTATION</p> <p>20% OFF</p> <p><small>COUPON Most vehicles. Must present coupon. Cannot be combined with other offers. Plus tax, shop supplies & environmental fees. Expires 7/01/2024.</small></p>	<p>We Repair All Vehicle Types</p> <p>Stop in for a FREE estimate</p>

Out in Nature

As part of Earth Day celebrations, Mike Tieleman, on behalf of Bryn Mawr Presbyterian Church, led a tree planting effort at Bryn Mawr Elementary School. He coordinated with the Minneapolis Nature Preschool so the students could participate. The volunteers had a blast guiding the kids to plant the tree. The students will water the tree every day until school ends. If anyone wants to help water the tree through the summer, contact Mike at mike.tieleman@gmail.com.



Gutter Cleaning
 Stay off the ladder, we'll do the cleaning!
 Call Larry!
 651-635-9228

20/20 Cleaning Family owned & operated for more than 20 years

Bryn Mawr Presbyterian Church Welcomes You!

✝

We Worship Each Sunday @ 10:30 a.m.
 Hybrid worship in-person and Zoom.
 For Zoom link email info@brynmawrchurch.org

✝

All Are Welcome Here!

COMPLIMENTARY ADVERTISEMENT In Exchange for BMNA Meeting Space

Presbyterian Bryn Mawr Church.org
 420 Cedar Lake Road South, Minneapolis MN 55405 • 612.377.5222

KATIE JONES
 for
MINNESOTA HOUSE




Proven leader.
 Coalition builder.
 Climate champion.
 Running to serve district 61a.

THE DFL PRIMARY IS AUGUST 13TH

Katie
 MN House 61A

Visit www.KatieJones.org

Prepared and paid for by Friends of Katie Jones
 4424 Lyndale Ave S, Minneapolis MN 55419

LongHammer Garage Makeovers

Decluttering
 Organizing
 Recycling
 Hauling
 Storage Solutions

Book us today & receive a Free 6' Custom Workbench a \$500 value!

WE DO BASEMENTS TOO!!!

info@LongHammerMN.com 612-352-7950

Find us on FB & LinkedIn

Search LongHammer, LLC



Youth & Schools

Register for School

Are you new to Bryn Mawr and have kids ages 4-18? Don't forget to register for school by calling 612-668-1840 or emailing sps.department@mpls.k12.mn.us for more information. You can also visit in person at John B. Davis Education Center, 1250 W. Broadway Ave, Minneapolis. Explore options online at <https://exploremps.org/>

252 Upton Avenue South
612-668-2500
brynmawr.mpls.k12.mn.us

Anwatin Middle School (6-8)
International Baccalaureate
256 Upton Avenue South
612-668-2450
anwatin.mpls.k12.mn.us

Anwatin Community Education
612-668-2470
commed.mpls.k12.mn.us

North High School (9-12)
1500 James Ave. North
612.668.1700
north.mpls.k12.mn.us

Contact Information For Our Community Schools

Bryn Mawr Elementary (PreK-5)



Anwatin Middle School

Good Morning America declared Anwatin teacher Ed Barlow a "Ray of Sunshine" on national TV in May. Superintendent Dr. Lisa Sayles-Adams along with school staff and students were there to support Mr. Barlow as GMA presented him with two giant checks: a \$5,000 gift from Donors Choose and \$30,000 from Box Tops for Education. Mr. Barlow has been teaching for nearly 40 years. "He has a marching band that goes around the neighborhood, and they play for the neighborhood," said one person familiar with Barlow. Yes he does, and it is a highlight of the year for Bryn Mawr! Congratulations Mr. Barlow!

North High School

Good Morning America traveled to our very own North Community High School during Teacher Appreciation Week to

honor dance teacher Kara Nobles! Expecting to be part of a feature on the performing arts in schools, Ms. Nobles was instead surprised by a moving tribute from her students. They talked about her impact on their lives and how her encouragement helped them to express their creativity and talent. The segment also featured a visit from the University of Minnesota dance team, who announced that North High dancers would be offered a chance to perform at halftime during an upcoming Gopher football game. To add to the surprise, GMA revealed that they would be sending Ms. Nobles and her five year old daughter to Disneyland! Congratulations to Ms. Nobles, her dance team, and North High for this amazing honor and opportunity. You can find the video segment on the Good Morning America website under their Living section — just search Minneapolis dance teacher!



Calling All Graduates!

The Bugle will be running its annual tribute to graduates in the JULY issue. If you or someone you know is a recent or soon to-be graduate, be sure to drop an announcement and a photo in the Bugle box at the Bryn Mawr Market. Include your name, school, and phone number so we can call with questions. Or contact us (612-377-8968, or e-mail bugle@bmna.org) and we will help you write the interesting particulars of your accomplishments and plans for the future.



Bryn Mawr Fifth Grade Field Trip to Eagle Bluff Environmental Center

Fifth grade Bryn Mawr Elementary students had three adventurous days the last week of April on their first trip to Eagle Bluff Environmental Center. School Social Worker, Nicholas Cross, organized and raised funds to make this trip possible for our students. He noted that the trip would not have been possible without the dedicated hard work of the fifth grade teaching team and further extended his gratitude to community members who donated funds to help bring this educational opportunity to our kids. Students experienced a variety of outdoor real world learning during the trip.

Naturally, many courses involved science themes. Students learned how to use a bow and arrow in Archery Engineers and experi-

mented with different types of arrows to try to determine the fastest arrow possible. In the woods, the young naturalists searched for animal tracks, scat, and other animal sign. They also touched snakes and turtles and Mr. Cross related that, "we hung out with a Turkey Vulture while we learned about the physics behind flight!"

Every student stepped into their personal "challenge zone" pushing through their fears as they embarked on a high ropes course. Teachers and chaperones enjoyed seeing kids on the platforms choosing their next challenge.

Students' fourth class was all about survival as they journeyed into the woods where they built shelters and tried to get fires started. Those who sparked a flame enjoyed warm lemonade.

Students also enjoyed traditional camp activities: s'mores at the bonfire after singing camp songs, free time in the dorms with friends, and a night hike watching the sun set and the full

moon rise over the Root River.

It takes great planning, patience, and persistent effort to plan such a learning experience for a large group of youngsters, but these are the learning opportunities that we all remember for a lifetime. Many thanks to our educators at Bryn Mawr Community School for bringing our students out into the natural world for authentic learning.



A Fond Farewell to a Beloved Teacher

Thank you Teacher Anita Chavez for your 28 years of service to the Bryn Mawr Community! Ms. Anita has been at Bryn Mawr since it opened in 1996. That's about 7,000 students that she has taught! Parent Jessica Wiley remembers when she was hired.

Ms. Anita sought out opportunities for the kids through partnerships and grants like The Loppet cross country ski program and before that buying ski equipment through the PTA, InnerCity Tennis, a snowshoe grant, First Tee golf, bike riding skills with Venture North and then other grants to purchase bikes, karate, dance, rugby, self-defense, taiko drumming, and

basketball, bringing in speakers from The Minnesota Lynx. The kids have been able to get outside and take advantage of their location adjacent to Wirth Park. Most of these kids would not otherwise be exposed to sports like snowshoeing and cross country skiing.

She works with the community to collect extra winter clothing to make sure everyone is warm enough. Neighbors have also answered the call when she has asked for sneakers to have on hand for gym class.

She is famous for saying at school fund raising events, "It's for the children!" Anita is always there for the children. This year, when Bryn Mawr started an after school program, she stepped up and taught kindergarten literacy.

Enjoy your well-deserved retirement Ms. Anita. We will miss you!



LITIN'S PARTY VALUE
YOUR DOWNTOWN PARTY STORE SINCE 1967

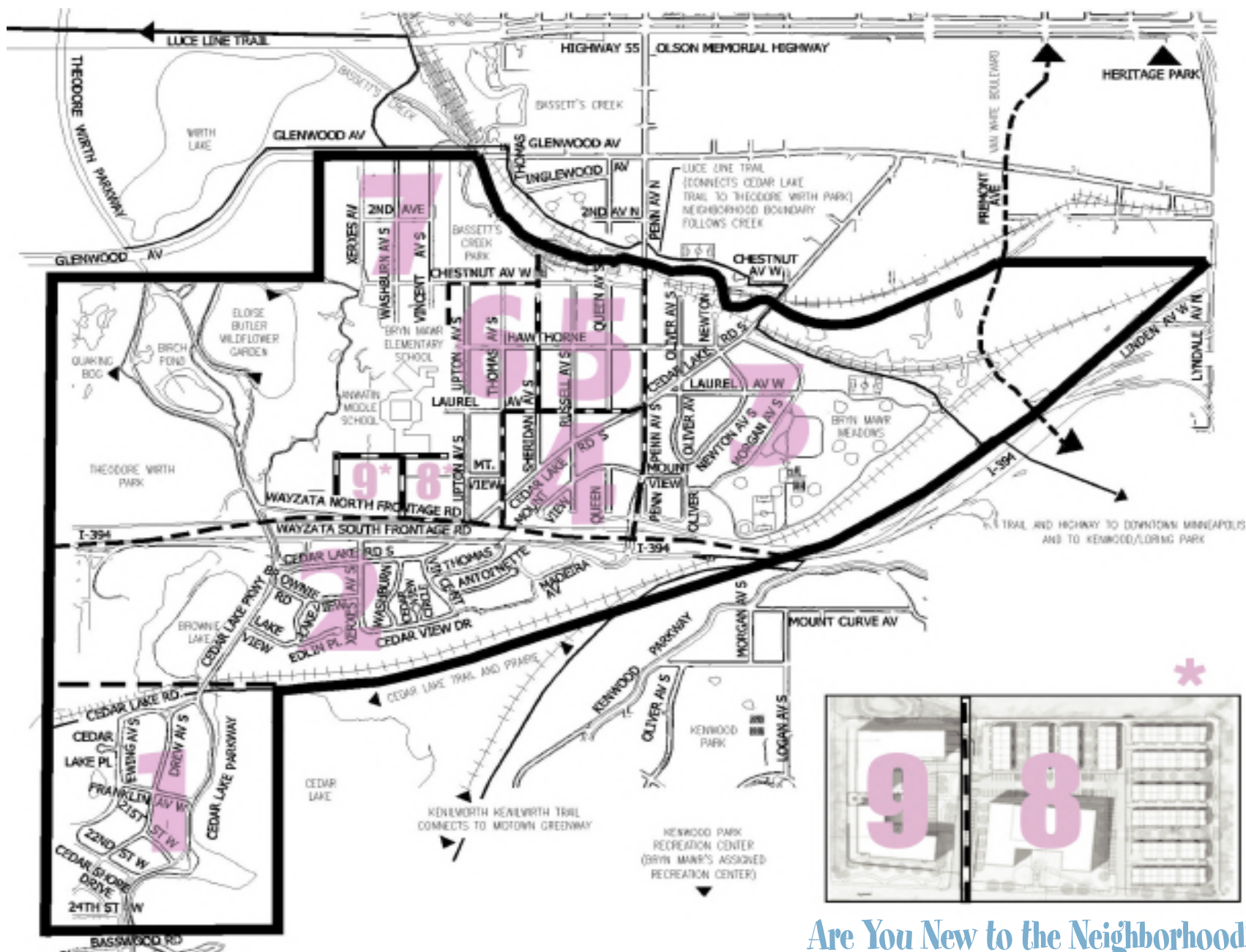
class of **2024**
CONGRATULATIONS GRADUATES!

PARTY PERKS
Buy More. Save More.
10% Off → \$100-\$249.99
15% Off → \$250 or more

GRAD PARTY HEADQUARTERS • ORDER BALLOONS AT PARTYVALUE.COM FOR PICKUP

913 Plymouth Ave N, Minneapolis 55411
Open 7 days a week - Free Parking
(612) 343-4300

Minneapolis



Are You New to the Neighborhood?

Contact Your Area Representative
for a Welcome Packet!

THE BRYN MAWR NEIGHBORHOOD ASSOCIATION

2915 Wayzata Boulevard, Minneapolis, MN 55405

BMNA Board Members

President: Brian Treece president@bmna.org 763.229.3663
 Vice President: Addie Arnold vicepresident@bmna.org 970.343.2825
 Treasurer: Karen Soderberg treasurer@bmna.org 612.710.4170
 Secretary: Jessica Wiley secretary@bmna.org 612.374.3481

Area Representatives

1 Liv Nielsen liv.nielsen@bmna.org 612.719.9734
 2 Susan Verrett susan.verrett@bmna.org 612.377.7447
 3 Allison Batzli allison.batzli@bmna.org 612.708.2135
 Mark Henry mark.henry@bmna.org 917.374.5216
 4 Beth Franzen beth.franzen@bmna.org 612.229.8123
 Josh Nichols josh.nichols@bmna.org 763.267.8905
 Alec Werning alec.werning@bmna.org 507.271.8863
 5 Beth Turnbull beth.turnbull@bmna.org 612.423.3033
 Colleen Dhennin colleen.dhennin@bmna.org 763.639.1868
 Katy Kessler katy.kessler@bmna.org 952.289.5430
 6 Drew Quirk drew.quirk@bmna.org 612.770.4984
 Haven Stephens haven.stephens@bmna.org 651.208.4517
 7 Anne Hartman anne.hartman@bmna.org 612.257.0069
 Steve Harvey steve.harvey@bmna.org 612.374.3613
 8 OPEN
 9 Carol Chapman carol.chapman@bmna.org 952.209.2960
 Doris Evans doris.evans@bmna.org
 Michael Scott michael.scott@bmna.org 612.220.2916

Emeritus Board Members:

Christopher Etz christopher.etz@bmna.org 612.378.2987
 Vida Ditter vida.ditter@bmna.org 612.374.1481
 Joanne Michalec joanne.michalec@bmna.org 612.377.3348
 Jay Peterson jay.peterson@bmna.org 612.377.4677
 Barry Schade barry.schade@bmna.org 612-203.1758
 Kevin Thompson kevin.thompson@bmna.org 612.296.5409

Bugle Corps

Editor
 JoEllyn B. Jolstad 612.377.8968
bugle@bmna.org

Communications and Development Coordinator

Lynda Shaheen 612.234.7819
coordinator@bmna.org

Events Coordinator

Patty Wycoff
 612-239-1710
events@bmna.org

Police Liaison CCP/SAFE

Shannon McDonough
 612.398.4707
shannon.mcdonough@minneapolismn.gov

Advertising

Deryck Jolstad 612-377-8968
advertising@bmna.org

Mailing Address

2915 Wayzata Blvd.
 Minneapolis, MN 55405-2145

Drop Off Box

Bryn Mawr Market,
 behind the counter

Webmaster

Jeremy Staffeld 906.361.1595
webmaster@bmna.org



Want Ads

Rates: \$4.50 minimum (4 lines, approx. 40 characters per line), \$5.00 per additional line. FREE ads for lost, found, free items, pets & youth ads. **Due Date:** 20th of preceding month. **Instructions:** No ads over the phone please or accepted without payment. Drop off in the Bugle Box at the Bryn Mawr Market or email bugle@bmna.org.

Be sure to check references, State Agencies, BBB, etc. and inquire about bonding when using any new service.

SERVICES

BLUE SPRUCE ECO-FRIENDLY CLEANING COMPANY. Owner does all work. A+ BBB rating. Thorough, dependable cleaning for 30+ years. \$20 off first two recurring cleanings. 763-498-2638. www.housecleaningminneapolis.com

CONCRETE/BRICK/STONE/MASONRY: Repair or New - foundations, driveways, sidewalks & steps, garage slabs, also kitchens & bathrooms. Call Gary 651-423-6666.

Need a bike tune-up? Josh Nichols (Area 4) and Benjamin Lester (Area 6) want to help get you ready to ride, with nice weather around the corner. Email josh.nichols@bmna.org and bikes@bnlstr.com to set up a spring tune-up, repair, flat tire fix, etc. As payment, we'd ask that people pick a trip that they would normally drive and bike it at least once to pay for the labor.

SNOW. SHRUB. TREE. LAWN.

Premier Lawn & Snow, Inc. providing reliable snow removal, lawn care, tree and shrub trimming with quality results for SW Minneapolis since 1987. For prompt estimate call or text Dennis (952) 545-8055.

WANTED

I'm looking for paint (preferably bright colors and exterior/outdoor grade). If you have any leftover paint in your basement then I would love to use it for a neighborhood improvement project! Let me know by emailing me: bikes@bnlstr.com

YOUTH SERVICES

LOOKING FOR A PET SITTER? You can email me, at emilymw2004@gmail.com if you'd like me to clarify anything or figure out the details.

Copy deadline for the July issue is June 20!

Display & Classified Ads are due June 20th. Ads must be pre-paid & camera ready. Call Deryck Jolstad at (612) 377-8968 or djolstad@msn.com for rates.



Bugle also available at bmna.org

A reminder that in addition to being delivered to your doorstep, the Bryn Mawr Bugle is available online at bmna.org. Click on the Bugle logo on the home page to read the current edition or go under the 'Bugle' tab to see past editions and to learn more about advertising rates and submission deadlines.

The Bryn Mawr Bugle is an open-forum newspaper published by the Bryn Mawr Neighborhood Association. Content is based entirely on volunteer submissions which may be emailed to bugle@bmna.org. Articles will be printed at the discretion of the Editor. The Bryn Mawr Bugle is published every month except January. Distribution is free to Bryn Mawr residents; copies are also available at the Bryn Mawr Market, Bryn Mawr Mobil and Cuppa Java. Opinion articles represent the opinion of the writer, not necessarily those of the Bryn Mawr Neighborhood Association or the Editor of the Bugle. Submissions may be edited for length without altering the letter writer's message. Under the law, writers, like journalists, may not commit libel, be obscene, reveal names of juveniles accused of crime, invade personal space, or incite to riot.

GENERAL ADVERTISING POLICIES: All ad copy is subject to approval by the paper, which reserves the right to reject or request changes to an ad. Ad placement does not imply endorsement by the BMNA. The advertiser, not the paper, is responsible for the truthful content of the ad. Readers use service/product providers at their own risk and are solely responsible for checking references, state agencies, BBB, etc.

COORDINATOR CORNER

Lynda Shaheen

Communications & Development Coordinator

612.234.7819 • coordinator@bmna.org

Contact for BMNA Meeting information & Spiritwear Sales

Sign up for email list at BMNA.org