



# BRYN MAWR BUGLE

Published by the Bryn Mawr Neighborhood Association

July 2024

## Bryn Mawr Neighborhood Association Ice Cream Social



Thursday, July 25th

6:00-8:00 PM

On Cedar Lake Road (in front of the church)

It's an ice cream party in the street! Please join us at the largest Bryn Mawr Neighborhood Association sponsored event of the year. We will have 10 different flavors of ice cream, Italian ice and sorbet.

Donations of any denomination accepted but not required to attend this event. The BMNA will be accepting non-perishable food items to be donated to NorthPoint Food Shelf. Boxes for food donations will be near the entrance of the event. The Bryn Mawr Market will dedicate their change bin to support the NorthPoint food shelf from July 1-25th.

Cuppa Java is offering 10% off purchases from 5-9 and staying open until 9. Bryn Mawr Pizza and Deli are offering 1/2 price slices 6-8.



Chicky Rooster will be playing during the event. Area 6 resident, Deacon Warner is a member of this great band.

- Wear your dancing shoes
- Bring a lawn chair
- Join the BMNA (optional cash, check or credit card donation)
- Our supplies for this event are 100% compostable

### Blood Drive Update

Our June 14th blood drive was another success. Our goal was 25 units and we collected 26. The blood collected has the potential to save 78 lives. Thank you to our volunteers from The Eloise and Area 5 resident, Mary DePaw.

Our next blood drive is scheduled for August 9th. Sign up to donate at [redcross.org](http://redcross.org).



### Pedal to Petals Rescheduled for Saturday, July 20th

Due to rainy weather, Pedal to Petals has been rescheduled to Saturday, July 20th. This is your chance to join the Bryn Mawr Garden Committee and the Bryn Mawr Active Transportation Committee for a bike tour of Bryn Mawr's public gardens! Bike with your neighbors on Saturday, July 20th at 1:45 PM (2:00 PM roll-out) for a neighborhood ride stopping at neighborhood gardens. At each stop, a gardener will give a brief explanation of the garden and will field questions from riders. The ride will begin at the Garden of Hope and Healing outside of Bryn Mawr Presbyterian Church and finish at Utepils. This ride is all-inclusive and no drop. To RSVP, fill out the form at this link: <https://forms.gle/KM3fLocaXz1trEKp9> and check out our event page on the BMNA website: [bmna.org/event/pedal-to-petals/](http://bmna.org/event/pedal-to-petals/) for more information. The event is free to join, but donations are encouraged.

Gear up for more Active Transportation events each month and stay tuned by following @activetransit.brynmawr on Instagram or send us an email at [activetransit-brynmawr@googlegroups.com](mailto:activetransit-brynmawr@googlegroups.com) to learn more.



### Racial Justice Committee

#### Dakota Sacred Sites Open Tours

July 27, 9:00am - 1:00pm

August 27, 10:00am - 2:00pm

Helping Minnesota Stories Dakota Sacred Sites Tours help people today more deeply understand the history and living legacy of Dakota Sacred Sites around the Twin Cities. Dozens of tours each year are organized for private groups. These two just-announced tours are open to the public. Register here., [www.mnchurches.org](http://www.mnchurches.org)

**RESCHEDULED:**  
Saturday, July 20th  
Meet at 1:45 PM  
2:00 PM Roll-Out

1. Downtown Gardens
2. Laurel Triangle
3. Newton Triangle
4. Bryn Mawr Meadows
5. Penn Ave Hedge
6. Upton Ave Garden
7. Cedar Lake Pkwy Garden
8. JD Rivers' Children's Garden
9. Utepils Brewing



## BRYN MAWR NEIGHBORHOOD ASSOCIATION

### Board Meeting Minutes

Wednesday, June 12, 2024

6:30– 8:00 PM

Hybrid Meeting

### Board and Staff

Brian Treece – President  
 Addie Arnold – Vice President  
 Karen Soderberg – Treasurer  
 Jessica Wiley – Secretary  
 Allison Batzli – Area 3 Co-Rep OL  
 Joshua Nichols – Area 4 Co-Rep  
 Alec Werning – Area 4 Co-Rep  
 Colleen Dhennin – Area 5 Co-Rep  
 Beth Turnbull – Area 5 Co-Rep  
 Katy Kessler – Area 5 Co-Rep  
 Haven Stephens – Area 6 Co-Rep  
 Stephen Harvey – Area 7 Co-Rep  
 Carol Chapman – Area 9 Co-Rep  
 Ms Doris Evans – Area 9 Co-Rep  
 Michael Scott – Area 9 Co-Rep  
 Chris Etz – Emeritus  
 Jay Peterson – Emeritus  
 Barry Schade – Emeritus  
 JoEllyn Jolstad – Bugle Editor

### Guests:

Kat Knudson - CenterPoint Energy  
 Hannah Gullickson - CenterPoint Energy  
 Al Swintek- CenterPoint Energy  
 Henry LaBounta - East Isles Neighborhood Association OL  
 Ellen Van Iwaarden - East Isles Neighborhood Association OL  
 Mike Tieleman - Area 2  
 Allison Reese - Area 3 OL  
 Jason Wood OL

OL - online

### Call to Order at 6:40 PM.

Agenda approval moved, seconded. Motion carried.  
 Minutes from April 10, 2024, moved, seconded. Motion carried.

### Natural Gas Line Replacements in Bryn Mawr - Hannah Gullickson, Al Swintek, Kat Knudson, CenterPoint Energy

CenterPoint will be replacing the natural gas plastic mains that are 50 years old, move inside meters to the outside of homes by appointment, and replace and/or reconnect natural gas service lines. Several months-long project beginning mid-July into fall. Will be marking all lines with spray paint and flags, ask that neighbors mark private lines such as sprinklers, dog fences. May have to enter a home - by appointment only. Michels Corporation is the contractor, they use big red trucks. Will restore all disrupted areas to their original condition. Parking restrictions will occur, sidewalks closed. Replacement uses boring, not trenching. 3x3 holes dug if plants need to be moved. Neighbors can talk with the crew or contact Gullickson for concerns about plants. Questions raised about damage to gardens from Board. Board members experienced with this work advise neighbors to be home when the appointment occurs. For

updates, visit [CenterPointEnergy.com/Construction](http://CenterPointEnergy.com/Construction). Click on Projects Sites, or contact communications specialist Hannah Gullickson at [hannah.gullickson@CenterPointEnergy.com](mailto:hannah.gullickson@CenterPointEnergy.com)

### Increasing Storm Drain Adoption with Hennepin County Good Steward Grant - Henry LaBounta, Ellen Van Iwaarden, East Isles Neighborhood Association

East Isles has received a Hennepin County Good Steward Grant for \$15,000; the grant includes Bryn Mawr and 8 other neighborhoods. Goal is to increase storm drain adoption to prevent water pollution in the chain of lakes. Dollars can be used to encourage storm drain adoption and clean up efforts. Adopting means regularly removing debris from the drain or calling 311 if drain is completely clogged, want only water to go down the drain. The grant can provide rakes, food, pickers, flyers, etc. Find more information at [Greenteam@eastisles.org](mailto:Greenteam@eastisles.org) Board will get information to neighbors, Allison Reese volunteered to be a point of contact for Bryn Mawr. Vast amounts of garbage are polluting the lakes; most of the trash comes from Hennepin County storm drains. Bryn Mawr has more storm drains than most neighborhoods, 18% are currently adopted. The Wedge and East Isles have 53% of storm drains adopted, sponsored 29 clean up days last year. Check [mn.adopt-a-drain.org/map](http://mn.adopt-a-drain.org/map) to find a drain near you.

### City of Minneapolis - Councilperson Katie Cashman

Read updates from Cashman at [minneapolismn.gov/ward7](http://minneapolismn.gov/ward7)

### Crime Prevention Specialist Report – Shannon McDonough

Only property crimes reported for this month. Board and neighbors can view crime stats at [minneapolismn.gov/resident-services/public-safety/police-public-safety/crime-maps-dashboards/crime-locations-map/](http://minneapolismn.gov/resident-services/public-safety/police-public-safety/crime-maps-dashboards/crime-locations-map/)

### Communications & Development Coordinator Report - Lynda Shaheen

Advertising Pedal to Petals, Blood Drive, Monthly Meeting, pet adoption event at Eloise. Working with Metro Transit and Active Transportation Committee on bus shelters at WOTW. Arranging another SWLRT walking tour of the station. Planning MN House 61A Candidate Forum with other neighborhood associations and League of Women Voters. Purchased Sign Up Genius; committees can get sub accounts Two neighborhood schoolteachers recognized recently. Eloise planning a Tour Bryn Mawr for Wednesday July 24th from 9 am to 3 pm. The Minnesota Pollution Control Agency requesting proposals to run community air monitoring pilot grant program. City NRP rep looking for feedback from Bryn Mawr. Received \$500 for swag sold at Big Hill Books. Further discussion about bus shelter or bench needed at the stop at WOTW. Shaheen, Ben Lester, and Alec Werning working on this.

### Event Coordinator Report – Patty Wycoff

Blood drive has 30 registered. Ice Cream Social on for July 25; have the street permit, Chicky Rooster band, four flavors of ice cream from Sebastian Joes. Working with Cuppa Java for a donation of ice cream. Will be collecting non-perishable food items for North Point Health and Wellness.

### Bugle Report - JoEllyn Jolstad

The 20th is the deadline for articles/ads. Bugle has been 16 pages for the last two months instead of 12. Color ads helping. July salute to graduates, more college grads than HS.

### Webmaster – Jeremy Staffeld

Jay reported: Website is old and unstable. Plug in from store is a problem right now. Talked with a couple of people about rebuilding website. Getting bids.

### Committee Reports

#### Schools – Colleen Dhennin

Last day of school is this Friday. Field day successful. Playground replacement is happening, big push from parents to get it back on track. No announcement for any schools to close. All elementaries are going to be 10 minutes longer, school will end earlier next spring. Middle school music teacher Ed Barlow received a \$35,000 grant.

#### Active Transportation- Josh Nichols

Met with Katie Cashman. Currently the only hood that has this committee. Efforts to get a trail along Bassett Creek are in the works, spearheaded by Dick Adair. Pedal to Petals ride to community gardens June 15, 6 miles with lots of stops. Find the pottery contest. Trail head ride at Theo Wirth, bike and dinner, July 19. Playground crawl, bike to different playgrounds about every two miles on the trail. Walk with Frank Hornstein.

#### Racial Justice – Steve Harvey

Dakota sacred sites has open tours July 27, 9:00 am, and August 27, 10:00 am. Looking for movie suggestions. Exploring a RJ book club. Harvey reading Three African American Classics. Rescheduling RJ meeting on Juneteenth.

#### Parks – Chris Etz/Barry Schade

June 13 dedication of new pickleball courts at Loring Park, 5:30. Chris Etz moved that the BMNA send a letter of support to the Park Board for financing for care and maintenance of pedestrian trails in city parks. Ms. Doris second. Friendly amendment to remove the word “paved” from the letter. Approved.

#### Gardens – Drew Quirk

Newton Triangle stump removed by Kota Tree. In-kind contribution will be recognized. Getting bids for planting. Recruiting sponsors to “adopt” gardens. Upton Garden mulch event successful. Twenty volunteers spread 12 yds in 1 hr. Bench procured and installed at Cedar Lake Parkway garden, ready for visitors. Downtown planters fully planted. Hedge trimmed freshly over past month. Mulch spread at Garden of Hope and Healing at Bryn Mawr Church, in-kind donation. Pedal to Petals event planning with Active

Transportation Committee. Great collaboration and group effort. Many channels of communication in place, big thanks to all who are supporting including Lynda Shaheen, Active Transportation Committee, Minneapolis Park Board Rep Alison Cole, Meadows Liaison Mike Welch, Eloise Butler staff. Question about whether Gateway Project will be a separate committee in the future.

#### Finance/Membership – Jessica Wiley.

Brian Treece reported that our first full year of investment yielded a 13% return. Dollars are reinvested. Committee meeting on June 26.

#### Elections – Addie Arnold

Michael Tieleman has stepped up to represent Area 2. Board voted approval.

#### Façade – Addie Arnold

Challenge getting fully completed applications, applicants must submit a bid from a contractor.

#### Community Projects - Jessica Wiley

In progress.

### Other Standing Reports

#### ROC/Basset Creek Valley Update

Jessica Wiley reported that at the May 21 ROC meeting, it was determined that the committee would not opt to become a formal committee of the Minneapolis City Council. Decision made to change the Bassett Creek Valley Redevelopment Oversight Committee into an advocacy group. Will determine membership at their June 18 meeting. Given the change in this committee status, Wiley suggested they not be on the agenda for a standing report, and that the four neighbors identified as BMNA be notified that BMNA will no longer be appointing reps to the group. Advocacy groups are always welcome to report to the BMNA by request.

### Discussion Items, New Business, Updates and Announcements

Area 9 reps asking that neighbors who have a problem with parking in front of their houses call the building management at WOTW or Penhurst and not confront people parking there. Will put an article in the Bugle reminding neighbors about what is or is not a parking violation. Jessica Wiley suggested that we review the Emeritus language in our by-laws to clarify how long Emeritus terms are.

Adjourned at 8:17 p.m.

NEXT BOARD MEETING:

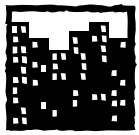
Wednesday, July 10, 2024

Upcoming Events:

Friday, June 13, 2024, Blood Drive  
 Wednesday, July 17, Minnesota House 61A Candidate Forum

Thursday, July 25, 2024, Ice Cream Social

The BMNA invites and encourages participation by every resident to each program, service and event organized by the BMNA. Should you require an accommodation in order for you to fully participate, or if you require this document in a different format, please let us know by contacting our neighborhood coordinator at [organizer@BMNA.org](mailto:organizer@BMNA.org) at least five days before our event.



**The City**  
ci.minneapolis.mn.us

### Popular Microbuses in North Minneapolis to Stay

**M**etro Transit has been piloting a ride-hailing service in North Minneapolis known as Micro Transit since the fall of 2022. The service fills transportation gaps in areas far from a central bus line, making getting to a school or grocery store in North Minneapolis easier and more affordable. Micro Transit will graduate from pilot program status to regular service this fall. Five microbuses operate at a time, and depending on demand, a pick-up can take 10 to 20 minutes. They currently operate in an area bordered by Lowry Avenue to the North, I-94 to the East, Theodore Wirth Park to the West, and I-394/Dunwoody Boulevard to the South. Officials will also announce two other Micro Transits routes. Users can hail a Micro Transit bus through an app. Those without smartphones can call 651-602-1170 to schedule point-to-point trips.

### “20 is Plenty” Yard Signs Available

**T**o help get out the word about local speed limits and the importance of slower speeds for safety, the City again has free yard signs for community members.

Slower speeds on local streets make travel safer for everyone no matter how you get around. Speeding is the No. 1 factor in severe and fatal crashes in Minneapolis; please slow down to save lives.

You can pick up a free “20 is plenty” yard sign from any of the free sidewalk sand pickup locations:

North: 2710 Pacific St., outside the main Public Works gate.

Northeast: 1809 Washington St. NE, outside the fence at Jefferson Street and 18th Avenue.

South: 27th Street just east of Longfellow Avenue near the Public Works gate.

Southwest: 6036 Harriet Ave. S., at the southwest corner of 60th Street and Harriet Avenue.

The signs come with metal stands. They're available to pick up 24 hours a day while supplies last.

### Summer is here and as people are outside more here are a few important safety reminders.

Pay attention when you are entering and exiting your vehicle

If you use ear buds, leave one ear open to stay alert

There is safety in numbers - especially when walking in secluded areas

If you carry a safety device, practice using it and have it at the ready

Remember, you can take every precaution and you could still be a victim



## Parking Rules Refresher

**A**s Bryn Mawr grows and welcomes new businesses and residents, here are a few parking reminders for our shared city streets. It's been a long time for most of us since we memorized these rules for a driver's exam!

- No parking within 5 feet of a driveway or alley entryway, measured from where the curb meets the driveway.
- No parking within 10 feet of a fire hydrant.
- No parking within 20 feet of a crosswalk or intersection unless there is a sign or parking meter.
- No parking within 30 feet of a stop sign or traffic light, unless there is a sign or parking meter.
- No vehicle may be parked over 72 hours. A vehicle missing vital parts will be towed.



- Vehicles must be parked within 12 inches of the curb and parked in the direction of traffic flow.
- No parking for vehicles over 10,000 pounds unless the vehicle is loading, unloading or providing a service.
- No commercial vehicle parking unless the vehicle is loading, unloading or providing a service.

If you have questions or concerns about a parking issue, please call 311.

## Minneapolis will Celebrate National Night Out Aug. 6

**N**ational Night Out is a time for City residents to come together and celebrate with neighbors. Many blocks in Minneapolis take this opportunity to reconnect, eat and build relationships while kids play and bike freely on a closed street. Our goal this year is to increase participation.

### Register your event by July 30

Registration is now open, and it's free. Sign up early. Registration closes July 30, five days before the event.

### Some points to consider:

- Register only one event per block, so confirm with your neighbors who will be registering.
- Consider whether you want your street blocked off to traffic.
- Ask neighbors for help organizing your event.
- Call 311 to request a fire truck, MPD K9, and/or MPD Mounted Patrol.
- Register your block event at the City of Minneapolis website.

Contact our City crime prevention specialist, Shannon McDonough with questions 612.398.4707, or email [shannon.mcdonough@minneapolismn.gov](mailto:shannon.mcdonough@minneapolismn.gov)



## Coffee with Katie

Mon, July 15th  
4:30 - 6:00 pm  
Sebastian Joe's  
1007 W Franklin Avenue S

Lowry Hill

Coffee with Katie is a monthly community conversation providing Ward 7 constituents a chance to share ideas, concerns, and opportunities with Council Member Katie Cashman. Coffee and tea provided. Come and go as your schedule allows!





Minnesota Senator District 61 Scott Dibble

Minnesota Representative Frank Hornstein

This month, join Council Member Cashman and special guests MN State Senator Scott Dibble and MN House Representative Frank Hornstein for a round table discussion recapping the legislative session and progress made in Ward 7.

Legislative Session Edition!

Sign up for the Ward 7 newsletter!

The meeting site is wheelchair accessible. For other reasonable accommodations such as a sign language interpreter or materials in an alternative format, please contact the Ward 7 office at 612-673-2207 or [Ward7@minneapolismn.gov](mailto:Ward7@minneapolismn.gov) by July 8th. Para ayuda, llame al 311. Rau kev pab, ku 311. Had iloal coawimod u boahantahoy, wac 311.

Minneapolis City of Lakes



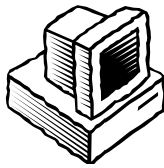
# Recycling

www.ci.minneapolis.mn.us/  
solid-waste  
(612) 673-2917

## Bryn Mawr Recycling Schedule

	Monday	Tuesday
Area 1	July 1 July 15 July 29	
Areas 4W, 5W, 6, 7	July 8 July 22	
Areas 2, 3, 4E, 5E		June 9 June 23

Use it up, wear it out, make it do, do without. Recycle.



# From the Editor

At a meeting recently, the organizer had us do an ice breaker designed to make a member of the team feel better about turning 50. The prompt was to share something you do that "old people" do. The most common response was from people who go to bed at 8:00 pm.

Since am seldom in bed before 11:30, I could not relate to that at all. I was not sure how to give my best advice. As someone already significantly past the dreaded 5-0, I am sure that everything I do is considered "old". But on the other hand, I had just spent the previous week in New York with our 25-year-old, running from one end of the city seeing four musicals in two days. So I concluded that the thing I do that old people do, is I ignore what other people think I should be able to do (for my age) and do whatever I want.

My life has been a whirlwind this past month. My week in New York concluded with our daughter's wedding. It was a truly wonderful event and I am still floating on air reliving the day through pictures. Two weeks after that, I was back in the air flying to Philadelphia to celebrate her graduation from her fellowship program. This trip also included a day trip to the Jersey Shore to visit her new in-laws. It just doesn't get any better

than soaking up the sea air and eating oysters with friends and family.

I was able to align my schedule some sunshine and spend our anniversary weekend at the cabin. Much shorter and simpler but also maybe sweeter. I feel like that's another thing that I have in common with (some) old people. I know how precious time is and I try to savor the simple moments with gratitude.

The school year has ended and week 1 of Super Summer Youth Programs is wrapping up. As a central office staff person, I was heavily involved in planning and setting up systems. Now I am running from one program site to another delivering supplies and providing other support. Even though I am also eyeball-deep in the Community Education summer musical (The Little Mermaid, July 12-22 at Southwest High School.) at least this year, I am not running a site (so far anyway, phew!)

July is one of my favorite editions of the *Bugle*. This is the month of course that we feature those graduating from high school and college. Not a huge class of Bryn Mawr grads this year, but still impressive accomplishments. Congratulations all around! Have fun, savor the small pleasures and avoid the trappings of growing "old".

- JoEllyn Jolstad, editor@bmna.org



## Area 4 Bugle Block Distributor Needed!

Russell between Laurel and Cedar Lake Rd and around the block to Sheridan (14 households)

The Bugle is delivered to every household each month by volunteer neighbors. The person who has been doing this route for many years, has stepped down. If you are willing able to take it over, please email bugle@bmna.org and we will connect you with the Area 4 distributor.

Your wedding dance, holiday party or event can be the very BEST!  
**LIVE music is more FUN!**



www.percolatorsband.com

Click, call, come see us LIVE! We'll rock your socks off!  
Hans Gasterland, drums. Call today: 612-723-5038

## Window Washing

Window washing, inside and out!  
"You'll see the difference!"

Call Larry  
651-635-9228



20/20 Cleaning Family Owned & operated for more than 20 years  
https://www.2020cleaningspecialists.com



JAY WILLIAMS, D.D.S.

612-377-3740

2218 LAUREL AVENUE • MINNEAPOLIS, MN 55405

## NORTH END HARDWARE



Exceptional Service

Have a job?  
We have a Tool.



Northend Rental  
Just Rent It!

NORTH END HARDWARE & RENTAL  
at PENN and LOWRY

Hours: M-F, 7 a.m.-6:30 p.m.; Sat, 7 a.m.-5 p.m.  
Darryl Weivoda, Owner

612-529-9151 • Northendhdwr@aol.com

## The AI Revolution: Navigating Its Impact on Elections

This is the third article in the League of Women Voters Minneapolis 2024 Democracy Series. All articles are available at [lwvmppls.org/for-voters](http://lwvmppls.org/for-voters)

In the evolving landscape of democracy, elections have long stood as the cornerstone of citizen participation and political representation. But with the rise of data-driven campaigning powered by artificial intelligence (AI) technology, the electoral process is rapidly being revolutionized in unprecedented and unpredictable ways. While AI represents clear progress for campaign outreach, messaging, and fundraising, all benefitting the electoral process, it also poses a threat to the very foundational principles of democratic systems by enabling the widespread dissemination of disinformation. In 2024, this new technology is affecting over 60 elections worldwide. This article takes a closer look at the enormous impact of these AI transformations on campaigns and elections - and what can be done about it.

### What is Artificial Intelligence (AI)?

Artificial Intelligence (AI) is advanced computer technology that uses smart, human-like cognitive abilities to analyze enormous amounts of data to perform tasks such as making predictions, recommendations and problem solving. Many AI applications have become part of our daily lives, including virtual assistants like Siri and Alexa, personalized content suggestions on Spotify and Netflix, Face ID on smartphones, and online search engines such as Google and Amazon.

While AI has been around for decades, its potential and influence increased significantly when ChatGPT, a powerful language processing technology that generates human-like text responses to user prompts, was introduced in November 2022. ChatGPT has been fine-tuned to engage in dialogue and simulate conversations so effectively that it is now widely used in chatbots. Its emergence has vastly expanded the possibilities and accessibility of generative AI to millions of users worldwide through apps and consumer software. It has quickly become the fastest-growing consumer application in history.

### Benefits and Dangers of (AI)

Communications and messaging in elections have greatly benefited from data-driven campaigning. Political parties and candidates can leverage AI-powered tools, including ChatGPT, to identify key issues and understand voter sentiment, resulting in improved personalized voter outreach, reduced administrative costs, and potentially higher voter turnout and a better-informed electorate.

However, the risks of AI misuse in elections currently far outweigh the benefits. AI's powerful ability to supercharge disinformation by spreading deceptive and misleading content on a large scale with the intent to harm poses a significant threat.

One imminent danger is the newly created phenomenon of deepfake images and videos. These highly realistic digital manipulations, created by AI tools, can be used to promote election disinformation and produced by anyone using readily available technology in just a matter of minutes. Deepfakes are typically generated to replicate the appearance and voice of specific individuals without their consent. They are often so convincing that they can be difficult to distinguish from real photos or videos. FBI Director Christopher Wray recently warned about the growing threat, saying generative AI makes it easy for "foreign adversaries to engage in malign influence."

Another risk is the ability to manipulate election outcomes by discrediting candidates or misleading voters through targeted biased campaign messaging on a much larger scale. One tactic involves producing multiple deepfakes loaded with factual inaccuracies and misrepresentations of information; another is inundating Facebook and online forums with fake information that are generated easily by AI tools from accounts posing as real users. This can significantly influence voter opinions and decisions, and potentially alter election results.

### How to Recognize Fake Information

Often, it's hard to know if something is real or not. If something seems off, try to exercise some caution—things aren't always as they appear. Ask some questions first before drawing any conclusions. It's especially important to avoid sharing information that might be false and intentionally malicious.

The National Conference on Citizenship has developed a useful tool designed to help detect fakes. It's referred to as SIFT: Stop, Investigate the claim, Find better sources and Trace the claim to its original source. While it's not foolproof, examining the content and identifying its original source can often provide insight into its intent and help determine its trustworthiness. Here is a list of reliable sources for fact-checking.

So there's some good news: taking personal responsibility for critically evaluating the information can be effective. Anyone can be the target of disinformation, so it's important to be aware, ask questions and be informed as best you can.

### Addressing the Dangers of AI in Minnesota Elections

In 2023, a new Minnesota State Law was enacted that bans election-related deepfakes. It makes it a crime to share a deepfake within 90 days of an election if the person knows, or should have known, it was a deepfake and acts with the intent to harm a candidate's reputation or influence the election result. The office of the MN Secretary of State is training and supporting election administrators through in-person trainings and conferences to ensure they are aware of new technologies and legal changes.

MN Secretary of State Steve Simon's office is also collaborating with tech

partners like Open AI, Microsoft, Meta, Snap, and Google through the National Association of Secretaries of State. They share resources and get feedback on using their platforms to direct people to trusted sources. Public messaging is another critical component of their strategy. Secretary Simon and their office members frequently engage with news media, voter outreach groups, and the public to educate them about AI and its implications. The MN Secretary of State website is continually updated and serves as a resource for Minnesotans to understand how the voting system works and how to be smart media consumers.

This issue extends beyond the state level and will require federal regulations to be effective. Senators Amy Klobuchar and Susan Collins

support bipartisan measures to address AI's impact on elections at the national level highlighted here. Secretary Simon recently testified in the US Senate Committee hearing on AI and elections. Simon's testimony called for a multilevel approach to the challenges posed by emerging AI technologies, advocating for the federal government and the private sector to work alongside state governments to prevent the creation and amplification of dangerous election disinformation.

For reliable information on elections, visit trusted sources like: [MNVotes.gov/elections-voting](http://MNVotes.gov/elections-voting), [Vote411.org](http://Vote411.org), and Minneapolis Elections & Voter Services. Staying informed and critical of the information is essential in navigating the AI revolution in the electoral process.

## Mapping the Urban Heat Island

Feeling the heat in your neighborhood? Help collect data on urban heat.

Be a "street scientist" and help discover which areas of your community are hottest during extreme heat. Hennepin and Ramsey counties are seeking volunteer community scientists to gather data as part of NOAA's 2024 Urban Heat Island Mapping Campaign

The mapping project is planned for Saturday, July 27. The date is subject to change based on weather conditions. Fill out the urban

heat island mapping volunteer interest form to get updates on the project and how to get involved. <https://www.hennepin.us/climate-action>

Volunteers will receive a \$25 pre-paid debit card as a thanks for their efforts.

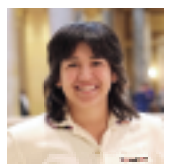


## MINNESOTA HOUSE DISTRICT 61A PRIMARY CANDIDATE FORUM

All candidates who filed with the Minnesota Secretary of State for the 61A seat were invited.



Katie Jones



Isabel Rolles



Will Stancil

Wednesday, July 17  
Starting at 7:00 p.m.

Lake of the Isles Lutheran Church  
2020 W Lake of the Isles Pkwy • Minneapolis, MN 55405

Please submit questions in advance to [voterservices@lwvmppls.org](mailto:voterservices@lwvmppls.org) with "MN House District 61A Forum" in the subject line. Questions will also be accepted at the forum.



The League of Women Voters website ([LWVmppls.org](http://LWVmppls.org)) will have a live stream link and an unedited recording will be available following the forum. Scan the QR Code for information on how to watch the live stream.

The forum will be moderated by the League of Women Voters.

**LWV** LEAGUE OF WOMEN VOTERS  
MINNEAPOLIS

Anyone requesting on site interpretative services please contact [voterservices@lwvmppls.org](mailto:voterservices@lwvmppls.org) before July 11, 2024.

Co-sponsored by -



**VOTE 411**

Register to vote, find your polling place, look up your ballot, and more at [VOTE411.org](http://VOTE411.org).

# KATIE JONES

for

# MN HOUSE



Engineer  
Proven leader  
Coalition builder

Running to serve 61A

THE DFL PRIMARY IS  
AUGUST 13TH

Visit  
[KatieJones.org](http://KatieJones.org)

Follow  
[@katiejonesmpls](https://twitter.com/katiejonesmpls)





Prepared and paid for by the Friends of Katie Jones Committee  
4424 Lyndale Ave S, Minneapolis MN 55419

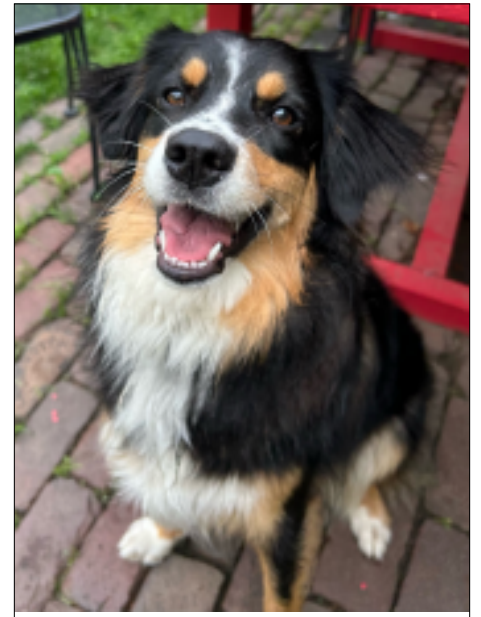


## Out & About

### Pup of the Month

By Carter Casmaer

Welcome to 'Pup of the Month', where we showcase Bryn Mawr's goodest dogs! This month we have the distinct pleasure of introducing you to the one and only Zula! Zula is a one year old Australian Shepherd who comes to us courtesy of Northwest MN Aussie Rescue (check them out!). This little lady has a beautiful, wild spirit. Zula is incredibly soft and impossibly silly. It should come as no surprise, given how she loves to express herself through song, that she shares a zodiac sign with Ariana Grande, Lana Del Ray and Missy Elliot. If extra terrestrials arrived on Earth Zula would, for sure, be selected to lead all diplomatic efforts. She is perpetually surfing a wave of stoke and she cannot be stopped. Zula is an excellent wrestler, she enjoys night walks and she sleeps on a queen sized bed. Allegedly, she was once driven by her boundless curiosity to disassemble a quilt which resulted in a brief suspension of her queen bed privileges. Zula maintains her innocence. Since her arrival on the scene she has been examined by some of the brightest minds in veterinary medicine for the purposes of discerning the precise origin of her



magnificence. However, all testing has thus far returned inconclusive. It seems that all we can say we certainly is that she is a very good girl!

I asked Zula if she had any advice to share with the humans of Bryn Mawr and she said, "Know that the key to peace lies within us. And while I can't find it for you, if you spend more time outside with dogs and the people you love it will reveal itself soon enough!"

If you'd like to submit an outstanding pup to be recognized please don't hesitate to contact [brynmawrpupofthemoth@gmail.com](mailto:brynmawrpupofthemoth@gmail.com).

## Bryn Mawr Neighborhood Association Calendar - July 2024

All meetings are open - everyone is welcome. Neighbors are urged to attend and participate in meetings and activities of special interest to them.  
Meetings are held at Bryn Mawr Presbyterian Church during the school year, unless otherwise noted.

Sunday	Monday	Tuesday	Wednesday	Thursday	Friday	Saturday
	1	2	3	Independence Day Holiday 4	5	6
7	8	9	10 BMNA Monthly meeting 6:30pm Bryn Mawr Church, 6:30pm & Google Meet. Joining link posted on BMNA.org.	11	12	13
14	15	16	17 MN House District 61A Candidate Forum, 7pm at Lake of the Isles Lutheran Church	18	19	20 Pedal to Petals 1:45pm (new date) Submissions due for next Bugle. Drop in the Bugle Box at the Market or email <a href="mailto:bugle@bmna.org">bugle@bmna.org</a>
21	22	23	24	Ice Cream Social 25 6-8 pm	26 Active Transportation Committee Bike to the Trailhead	27
28	29	30	31			

## School's out for summer...

Many teachers came out to cheer on the students as they left on the last day of school. Photos by Jay Peterson, Area 4



## CenterPoint Energy to Replace Gas Lines in Bryn Mawr

For several months beginning summer 2024, CenterPoint Energy's authorized contractors will work in the Bryn Mawr Neighborhood in Minneapolis to replace the natural gas mains, move inside meters outside by appointment, replace and/or reconnect service lines to the new main, and restore the areas affected by this work.

Michels Corporation will replace the natural gas plastic mains, move inside meters to the outside of homes by appointment, and replace and/or reconnect natural gas service lines. Q3 Contracting will restore the areas affected by Michels Corporation's work. There will be no assessment or cost associated with our work.

The customer will receive a CenterPoint Energy postcard in the mail describing the project before the natural gas crews perform the work. The crews will have CenterPoint Energy-authorized photo IDs. After the customer receives the postcard, the foreman will arrive at the customer's house to schedule an appointment that typically meets with the customer's schedule. If the customer isn't home when they arrive, they will leave a door tag with their contact information to schedule an appointment with them.

One natural gas crew typically works on about one block per week. They will either fully replace the service line or reconnect it to the new main, depending on the line's age. For most properties, the crews remove at least one sidewalk panel in front of the house, excavate a hole by the outside meter, and bore the service line from the sidewalk to the house.

For inside meters, the crew will make a two- to three-hour appointment at a time that works with the resident. We encourage customers to work with the crew on where they want the meter to go, keeping limitations in mind such as a minimum of three feet away from areas such as windows, doors, and vents.

Customers with outside meters will be notified prior to the replacement or connection of the service lines to the new mains. The technician will access the natural gas meter inside the house, move the meter outside, and relight the natural gas appliance pilot lights after the new meter has been relocated.

### Contact information

To sign up for updates, please visit [CenterPointEnergy.com/Construction](http://CenterPointEnergy.com/Construction) and click on "Project Sites" and "Minneapolis." We hope to minimize the disruption as much as possible. For any questions, please reach out to CenterPoint Energy's Communication Specialist at [hannah.gullickson@centerpointenergy.com](mailto:hannah.gullickson@centerpointenergy.com) or 612-321-5546. Thank you in advance for your patience and understanding as we replace our infrastructure. We wish you a great season!

## Join Our July Ride to Wirth Trailhead!

Join your neighbors and the Active Transportation Committee for our July ride to the Theodore Wirth Trailhead for music at the trailhead

on Friday, July 26th. We'll meet at the Garden of Hope and Healing outside of Bryn Mawr Presbyterian Church to ride over together. Music goes from 5:00 PM until 7:30 PM, and we will ride back as a group after the music is over. Don't forget to bring a lock and your bike

lights! Check our Facebook event page, Instagram page (@activetransit.brynmawr), and email updates for more details on timing closer to the event. Feel free to send us an email to learn more: [activetransit-brynmawr@googlegroups.com](mailto:activetransit-brynmawr@googlegroups.com)



[instagram.com/loppetfoundation](https://www.instagram.com/loppetfoundation)



## Good neighbors make the difference

Being a good neighbor means being there for my community. As your local State Farm® agent, I'm ready to help whenever you need me. Give me a call.

We Actively Support Our LGBTQ, BIPOC, and Latino Neighbors. Minnesota Strong We Stand Together!



**Steph Swanson**  
Agent  
1422 W Lake St Ste 216  
Minneapolis, MN 55408-2616

Bus: 612-721-2248  
[www.stephswanson.com](http://www.stephswanson.com)  
[steph@stephswanson.com](mailto:steph@stephswanson.com)

Se habla español.

State Farm  
Bloomington, IL





## Gardens

### Thanks to Kota Tree Care!

Many Bryn Mawr neighbors know Dakota Deringer and tagged his business, Kota Tree Care, a “Neighborhood Fave” on Nextdoor in 2021, 2022 and 2023. In addition to his tree services, Dakota also rescues cats from trees. Dakota removed an old stump in the newest of Bryn Mawr’s Community Gardens, the Newton Triangle, that prevented us from planting the garden. When asked for help by one of his customers who is also on the Garden Committee, Dakota didn’t hesitate to offer his service for no charge. Thank you Dakota!

### Pedal to Petals - Rescheduled for July 20th!

Well neighbors, our initial scheduling attempt for the Pedal to Petals event this year got washed out. Fear not, though: we’ll take another run at it on July 20th - come join us! As a reminder, we’re partnering with the Active Transportation Committee to re-introduce, after 12 years of hiatus, the “Pedal to Petals” group bike ride event. This family-friendly group bike ride will take a tour through many of the public gardens that are maintained entirely by neighborhood volunteers and funded by our neighborhood association. Learn about the design and planting strategies that have been used over the years, and also learn about some of our larger neighboring public spaces from experts of the

Bryn Mawr Meadows project as well as the JD Rivers Children’s Garden.

Registration is free, but we do hope the event will raise awareness of our constant need for volunteers and tax-free donations! More info and a sign up form can be found at [www.bmna.org/event/pedal-to-petals](http://www.bmna.org/event/pedal-to-petals)

We will meet at the Garden of Hope and Healing in front of the Bryn Mawr Presbyterian Church at 2:00pm, weather permitting. Hope to see you there!

### Native Spring Cheer

Golden Alexanders (*Zizia aurea*) with its bright green foliage and cheerful yellow umbels is a welcome pop of color in a spring garden from May through June. In my garden, I love them combined with the pea-like flowers of native false blue indigo (*baptisia australis*) which



blooms at the same time. It’s low maintenance and quite versatile adapting to a variety of habitats including clay soils in full sun to part shade. It can withstand dry conditions provided it gets enough early season moisture. Anywhere from one to three feet tall, my plants tend toward the tall side and I prefer to cut them back after blooms are done.

This native plant provides an important nectar and pollen source for insects just emerging for the season. The specialist mining bee *Andrena ziziae* is so named because the female eats only the pollen of this plant. It is also a host plant for the black swallowtail butterfly. I’ve been fortunate to spot the distinctive green with black and yellow striped caterpillar in my garden.

### Observations on a Wet Spring

Hasn’t it been delightful not to worry about watering your garden this spring? Such welcome and needed rains— not only for our beautiful Bryn Mawr gardens, but for farmers and the whole state as well.

All the rain has also made me notice, and remember once again, the lesser-known benefit of a well mulched garden. I’ve noticed again that raindrops falling on unprotected soil create a serious splashing which throws soil particles a fair distance—6-10” judging by my siding and garage door. This soil splashing also moves and distributes any harmful organisms in the soil (fungi and bacteria) that can sometimes be vectors of plant diseases. So, now you can add “reducing the spread of plant diseases” to the list of benefits resulting from a well mulched garden. Mulch also conserves soil moisture, keeps soil from becoming overly heated, insulates more tender plants in the winter months and suppresses the growth of unwanted plants (what we commonly call weeds). And don’t forget, mulch is also a wonderful, permeable option for garden pathways. It’s also biodegradable and usually relatively inexpensive, compared to hardscape options. Lots of reasons to sing the praises of mulch!

(Technical notes on mulch: Organic mulches can be leaves fallen from trees in your yard, or supplemented by shredded wood, available in bags from garden centers, or by the truckload for bigger projects. Rock mulch is less desirable and problematic for multiple reasons. Instead of insulating the soil it acts as a heat sink. And weeds are harder to pull if they germinate in rocks. You can’t easily dig into rock mulch if you want to remove or add plants. And it is devilish to remove and get rid of rock mulch if you decide to change your garden’s design.)

My second musing on gardening this year is to sing the praises of dead-heading plants.

As we are moving into the heavy blooming portion of the year, I am proposing you walk around your garden each day to deadhead any spent flowers you see. In the case of annuals, this promotes continued blossom production for the whole summer. For perennials, it can foster a second flush of blooms, plus it makes your plants seem tended and prettier. In many cases (i.e. tulips, peonies, irises) it also diverts the plants from using its

resources to create unnecessary seed heads. But the real reason I recommend it is for a daily appreciation of the beauty of your yard. While dead-heading this spring, I’ve seen giant bumble bees visiting flowers they can barely fit on and I’ve seen a butterfly species I’ve never seen before in my gardens. I’ve noticed unfamiliar transient birds passing through and discovered unexpected lumpy toads. I’ve also stumbled onto foot-high weeds I managed never to have noticed before and unwanted worms making homes in the tips of my hydrangeas! But I’ve also noticed other plants which are at their peak of beauty, which I could have missed if I were not out on my daily deadheading rounds. So give yourself the pleasurable task of daily deadheading! You will be well rewarded.

### Garden Sponsor Opportunity

Looking to create a meaningful impact in your community? Adopt a garden! With your support, you can ensure that one of the twelve BMNA gardens is thriving and inviting to all!

With limited city funding, we rely on your financial contribution to maintain the beauty of our neighborhood. Your sponsorship of a garden includes:

- Annual mulch to protect the plants and flowers and to keep the gardens looking beautiful
- Access to city water because we all need fresh clean water to stay healthy!
- Plant replacement (affected by weather, pests, or heavy foot traffic)
- TLC from dedicated volunteer gardeners
- Your name will be recognized in the Bugle in August and on-site throughout the growing season to acknowledge your valuable contribution to the garden and your BMNA community. Did we mention that your contribution is tax-deductible?

Please help grow your community! Register your family or business to support your neighborhood garden. From the donation web page: [www.bmna.org/membership-and-donations/](http://www.bmna.org/membership-and-donations/) choose the “donate in memory/honor” and type Garden Sponsor in the “in memory or honor of” box. Recommended sponsorship amount is \$200, which covers the cost of basic mulching and watering for a typical garden. Thank you for your support!

### Next Garden Committee Meeting

Monday, July 8, 7-8:30pm, at 2915 Wayzata Ave S. Check back at [bmna.org/events](http://bmna.org/events) for the latest info. Join us to talk about community garden work day events, improvement projects, gardening fun and learning activities. Regardless of skill level, we could use your help! And keep an eye out for our signs to join in the fun on any workday.

### Have Questions? Want to learn more?

Email [gardens@bmna.org](mailto:gardens@bmna.org)  
Follow Bryn Mawr Gardens on Facebook  
Visit us at [bmna.org/gardens](http://bmna.org/gardens)

*Kathy Ripke (Area 6), Rod Miller (Area 6), Patti Bobaty (Area 2), Jess Haverstock (Area 3), Drew Quirk (Area 6)*




## Bryn Mawr Soap

On sale at Bryn Mawr Market  
and Twin Cities area co-ops

[www.brynmawrsoap.com](http://www.brynmawrsoap.com)      612-374-3613

## BRYN MAWR ALMANAC



July 3, 1982	Fireflies blinking in the backyard.
July 14, 1999	High 96°. In hot dry weather, set the lawn mower higher, mow less often, and trickle-water shrubs, especially evergreens
July 21, 2024	Full moon, the Ojibwe Abitanibi Giziz or midsummer moon.
July 23, 1987	12 inches of rain over five hours in the evening, as a massive thunderstorm stalls over the Twin Cities. Everything flooded, including I-35 W in South Minneapolis and our basement.
July 31, 1978	High 105° at MSP, highest in the years I’ve been recording this stuff.



# Bryn Mawr Church History

By Jim Hooker, Area 5

As Minnesota was becoming a state, the Dakota land surrounding Ft. Snelling was sold by the government to farmers and other businesses. Much of Bryn Mawr east of the line that became Penn Ave was bought by a man named Haloran in the 1850s and he built his farmhouse in what is now Anwatin's parking lot. Over the next few decades, he sold off pieces of his property, and by the 1890s the Pillsbury family owned the block on which BMPC now stands. In the 1920s, as BMPC was incorporated from a Sunday School chapel into an actual church, the Pillsbury's donated four lots to the church. I can't find any discussion in the Session minutes about how the Pillsbury family was persuaded to do this - they were members of Westminster downtown and didn't attend the Bryn Mawr chapel. But hey, what's a few extra lots when you own the biggest mills in Minnesota?!

The lots stood empty as BMPC met in the chapel on Penn Ave, and in 1929, we hired an architect to design a new church building. Wow - did they ever!

The proposed front door is closest to the tip of the triangle and opens into the large cathedral-like sanctuary, with offices and classrooms



where our sanctuary is today. A fundraising pamphlet is attached in PDF form below.

Spoiler alert - this didn't get built. Throughout the 1930s we tried to raise funds and debate began between fixing up the Penn Ave chapel and building new. Finally it was decided to build new in two phases. In December 1941, Rev. George Carey put shovel to dirt and broke ground on the first portion. The Star Tribune captured the moment.



In just a few months, the building was completed, and by the summer of 1942 we were meeting in our new building.

Then, things started to get interesting. Stayed tuned to these pages to learn the dramatic next chapter!

## Bryn Mawr Presbyterian Church Welcomes You!

✠  
**We Worship Each Sunday @ 10:30 a.m.**  
 Hybrid worship in-person and Zoom.  
 For Zoom link email [info@brynmawrchurch.org](mailto:info@brynmawrchurch.org)

✠  
**All Are Welcome Here!**

COMPLIMENTARY ADVERTISEMENT In Exchange for BMNA Meeting Space



# DWI CRIMINAL DEFENSE

## 24 HOUR HELP

- TESTING ADVICE • BAIL • JAIL RELEASE •
- DETOX RELEASE
- DRUGS

### OVER 30 YEARS EXPERIENCE

SUPER LAWYER  
2006 through 2016



GERALD MILLER, P.A.  
LAWYER

**FREE INITIAL CONSULTATION**

# 612-341-9080

# FURTHER performance

VW • AUDI • EURO • CLASSIC

- MAINTENANCE
- RESTORATION
- PERFORMANCE

NEW LOCATION

305 THOMAS AVEN., MINNEAPOLIS

# 612-374-2604

FPTUNED.COM

# LongHammer Garage Makeovers

- Decluttering
- Organizing
- Recycling
- Hauling
- Storage Solutions

Book us today & receive  
 a **Free 6' Custom Workbench**  
 a \$500 value!

## WE DO BASEMENTS TOO!!!

[info@LongHammerMN.com](mailto:info@LongHammerMN.com) 612-352-7950

Find us on FB & LinkedIn

Search LongHammer, LLC

# Bryn Mawr School Playground Update

Maggie Koerth

The school board voted to reinstate the playground contracts at Bryn Mawr, Pratt, and Kenwood. Construction will likely be delayed because of the delay in contract approval, so expect it sometime after the beginning of the new school year.

We owe a lot in this to School Board Representative Abdul Abdi, who is not our school board rep, but who did a lot of the behind-the-scenes work to make sure the board learned about what Bryn Mawr and Pratt schools were losing by not getting new playgrounds. He worked with the board and parents at Ella Baker to come up with some creative

solutions that get us our playground and move forward the district's larger goals around accessibility. If you are moved to send him a note of gratitude, he can be reached at [abdul.abdi@mpls.k12.mn.us](mailto:abdul.abdi@mpls.k12.mn.us).

I also want to give a special thanks to the parents who came out to speak to the media. Aza Abe, Shanetta Trundle, Courtney Bailey ... you all rock. And thanks to the parents who were able to make it to the school board meeting tonight. Jennifer Ikoma-Motzko, Elizabeth Nee, and Linnae Nelson-Seys (and Taylor Ricci who wanted to be there but was called into work). Thank you all for giving your time for the school and all our kids!



**Disney THE LITTLE MERMAID**

July 12-20  
Southwest High School

Tickets available at [qrco.de/CEMusical](http://qrco.de/CEMusical)

\$18 Adult  
\$15 Adults 62+  
\$8 Child

Call 612-668-3100 with questions.

QR code

**Join us for Minneapolis Community Education's annual intergenerational production.**

Disney's The Little Mermaid is presented through special arrangement with Music Theatre International (MTI).

All authorized performance materials are also supplied by MTI. [www.mtishows.com](http://www.mtishows.com)

**Community Education**  
YOUTH & ADULT PROGRAMS

**Kate's Kanine Kamp**




Boarding, Walks, Day Care, Big Fun!

**Kate Hurley**  
(612) 377-7240

Schedule a Meet & Greet  
Bryn Mawr Location  
References Available

**Rasmusson Cleaning Service L.L.C.**

**Airbnb Commercial Residential**



**218-451-8413**  
[www.rasmussoncleaning.com](http://www.rasmussoncleaning.com)  
"Don't Fuss, Call Us"



# Youth & Schools



## Field Day Fun

Volunteers from Bryn Mawr Neighborhood Association and Bryn Mawr Presbyterian Church volunteered at the annual Field Day event at Bryn Mawr School in June. There were 22 stations with things like hula hoop, football toss, tug of war, relay races and more. The students had a blast rotating through and trying everything out. It was an extra special day since it was PE teacher Anita Chavez's last Field Day before retiring after 34 years! The students, teachers, and volunteers were exhausted by the end of the day of fun in the sun.

## Volunteer Thank You!

Thank you to our neighborhood volunteers who supported the Every Meal program this school year at Bryn Mawr School. Every Friday these volunteers delivered bags of food to students who could benefit from having extra food on the weekends when they do not receive school breakfast and lunch. These volunteers delivered 2,345

bags over the course of the school year. The program is a partnership between Bryn Mawr Presbyterian Church, Every Meal, and Bryn Mawr School. We thank Carol Slough, Joan Holdefer, Dick and Connie Adair, Wendy Nove, Colleen Dhennin, Patty Wycoff, Todd Marshall, and Steve Huey. If you are interested in getting involved next year, contact Lynda Shaheen, [lynda.shaheen@gmail.com](mailto:lynda.shaheen@gmail.com).

## Register for School

Are you new to Bryn Mawr and have kids ages 4-18? Don't forget to register for school by calling 612-668-1840 or emailing [sps.department@mpls.k12.mn.us](mailto:sps.department@mpls.k12.mn.us) for more information. You can also visit in person at John B. Davis Education Center, 1250 W. Broadway Ave, Minneapolis. Explore options online at <https://explorempls.org/>

## Contact Information For Our Community Schools

(note schools are closed for summer break until late August)

**Bryn Mawr Elementary (PreK-5)**  
252 Upton Avenue South  
612-668-2500  
[brynmawr.mpls.k12.mn.us](mailto:brynmawr.mpls.k12.mn.us)

**Anwatin Middle School (6-8)**  
International Baccalaureate  
256 Upton Avenue South  
612-668-2450  
[anwatin.mpls.k12.mn.us](mailto:anwatin.mpls.k12.mn.us)

**Anwatin Community Education**  
612-668-2470  
[commed.mpls.k12.mn.us](mailto:commed.mpls.k12.mn.us)


**North High School (9-12)**  
1500 James Ave. North  
612.668.1700  
[north.mpls.k12.mn.us](mailto:north.mpls.k12.mn.us)

**Gutter Cleaning**

Stay off the ladder, we'll do the cleaning!

Call Larry!  
651-635-9228

**20/20 Cleaning** Family owned & operated for more than 20 years



**Northwestern Tire Co. Inc.**

**1200 Glenwood Ave. N.**  
**Minneapolis, MN**

**612-377-4900**

[www.northwesterntire.net](http://www.northwesterntire.net)

**SAVE on TIRES**

**SUMMER CAR CARE PACKAGE**

**\$29<sup>95</sup>**

COUPON  
Most vehicles. Must present coupon. Cannot be combined with other offers. Plus tax, shop supplies & environmental fees. Expires 8/01/2024.

**A/C RE-CHARGE**

**10% OFF**

COUPON  
Most vehicles. Must present coupon. Cannot be combined with other offers. Plus tax, shop supplies & environmental fees. Expires 8/01/2024.

**OIL CHANGE WITH FREE TIRE ROTATION**

**20% OFF**

COUPON  
Most vehicles. Must present coupon. Cannot be combined with other offers. Plus tax, shop supplies & environmental fees. Expires 8/01/2024.

**Service Special**

**\$10<sup>00</sup> OFF** Any Service Over \$100

**\$20<sup>00</sup> OFF** Any Service Over \$200

**\$50<sup>00</sup> OFF** Any Service Over \$500

COUPON  
Most vehicles. Must present coupon. Cannot be combined with other offers. Plus tax, shop supplies & environmental fees. Expires 8/01/2024.

**We Repair All Vehicle Types**

**Stop in for a FREE estimate**



## Graduations 2024



### Ajay Torborg, Area 2

Ajay Peters Torborg graduated Cum Laude from Northland College with a Bachelors Degree in Environmental Science with a focus on ecological restoration. Ajay will be a kayak guide in the Apostle Islands this summer before planning his next adventure in the fall. His proud parents are Janet Peters and Alan Torborg of Area 2.

### William Marshall, Area 2

William Marshall graduated from Amherst College, Amherst, MA in May. Will graduated magna cum laude and was inducted into the Phi Beta Kappa Society. He completed a double major in Economics and Math. Will played on the baseball team all 4 years. During his time at Amherst, he worked as an admissions tour guide, announcer for athletic events, and for the math department. He is the son of Todd Marshall and Lynda Shaheen and a proud graduate of Bryn Mawr Elementary, Anwatin Middle School,



and Southwest High. Will is moving to Boston to work for Cornerstone Research.



### Elliot Etz, Area 4

We are so proud of our son, Elliot, for graduating from Iowa State University with a degree in Aerospace Engineering! Elliot is heading to Denver to start his career as a Satellite Guidance and Controls Engineer with Lockheed-Martin. -Chris Etz & Cathy Skalicky

### John Tuite, Area 4

John Tuite, son of Paul and Marilee, graduated from St. Louis Park High School with highest honors. He earned the International Baccalaureate diploma, Minnesota Platinum Bilingual Seal, Global Seal of Biliteracy, and a National Merit Scholar Commendation. John played soccer all four years and was a Varsity captain last fall. He served as secretary of the National Honor Society board and was active in the Environmental Club. One favorite class was AP Environmental Science (APES), and he enjoyed being a student aide to APES two years later. Another favorite class was IB German. For K-8, John attended Twin Cities German Immersion School where he achieved the DSD I diploma and qualified three years in a row for the Minnesota State



GeoBee. This summer John continues to work part-time as an instructor at Mathnasium and also plays club soccer. In the fall he will attend the University of Minnesota to study in the College of Biological Sciences and the Honors Program.

### Rebekah Gendler, Area 5

Rebekah Gendler graduated from Minneapolis Southwest High School with highest honors, multicultural honors, and a Minnesota Bilingual Seal. She was a member of National Honor Society, the ASL club, and co-founder of Jewish Student Union. She played varsity basketball where she received an all state academic award and was a member of the all-city team, as well as being voted a rookie of the year in track and field. This summer Rebekah is working as the Youth Coordinator for Isabel Rolfes' campaign. In the fall she will be studying Peace and Con-



flict Studies at Swarthmore College while playing collegiate basketball and track and field.

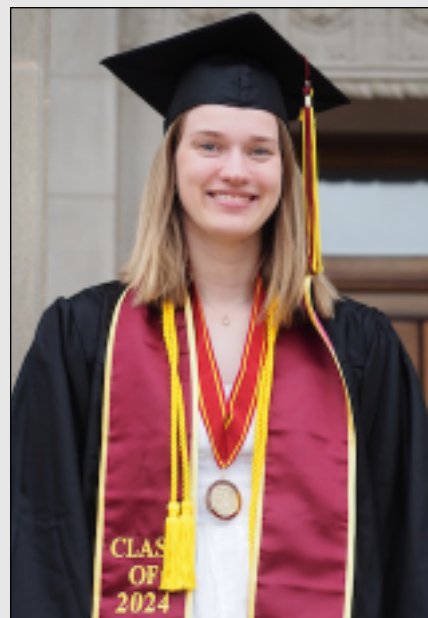
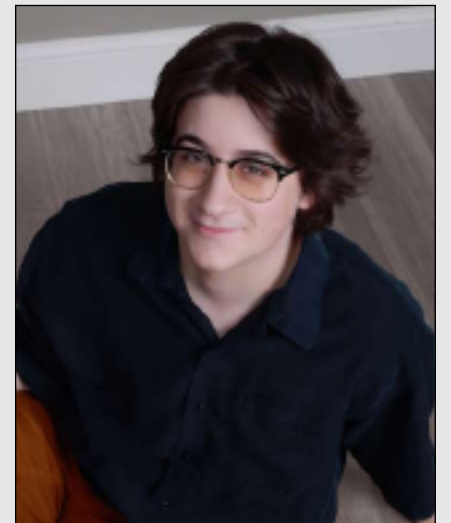


### Peter Davis, Area 6

Southwest graduate Peter Davis will be studying nursing at St. Olaf College in Northfield, MN. This summer will be filled with trips with family and friends to the Tetons and the Quetico along with construction work for the family business. His parents are Joe and Jane Davis.

### Solomon Lubka, Area 6

Solomon Lubka graduated from St. Louis Park High School after having a great time participating in Esports and Band. He has been working at the Kenwood Assisted Living Facility as a server for two years and will continue to work there over the summer. He is excited to be heading to UMD in Duluth for college. Solomon lives with his mom Gail Freedman, dad Reuben Lubka and older brother Ben in Area 6.

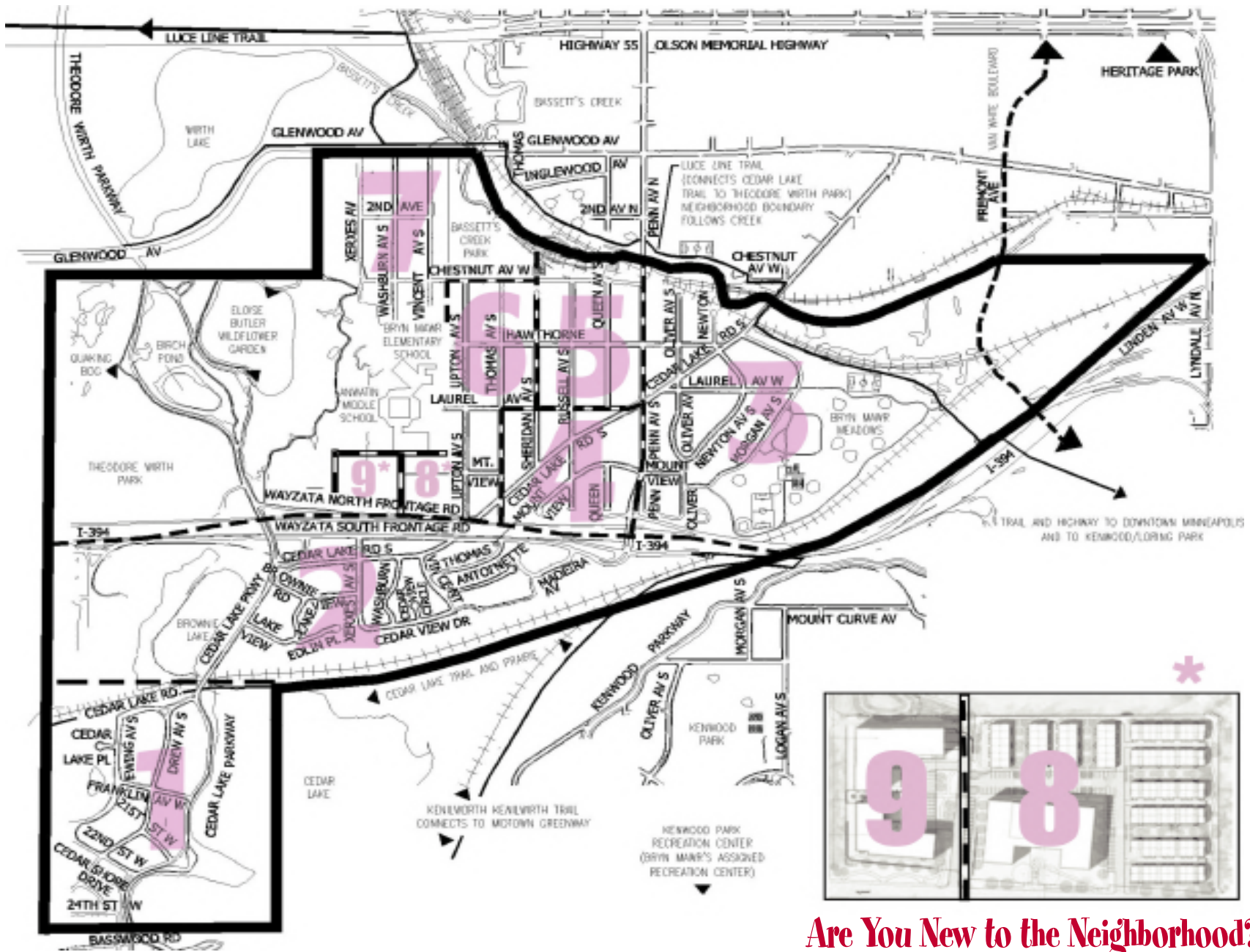


### Abigail Smith, Area 6

Abby Smith earned her Bachelor of Science in Nursing from the University of Minnesota this May, graduating summa cum laude. She attended Bryn Mawr Elementary, Anwatin Middle School and Southwest High School. She passed the MN nursing license exam this June and has accepted a position at Regions Hospital St. Paul in the emergency department. Parents Dennis and Kristen Smith, along with siblings Katherine and Thomas, are excited to see her start her career and next stage of adulthood.

*Congratulations to all the Graduates  
and their families.*

**Good luck in the future as you pursue your dreams!**



## Are You New to the Neighborhood?

Contact Your Area Representative  
for a Welcome Packet!

## THE BRYN MAWR NEIGHBORHOOD ASSOCIATION

2915 Wayzata Boulevard, Minneapolis, MN 55405

### BMNA Board Members

President: Brian Treece [president@bmna.org](mailto:president@bmna.org) 763.229.3663  
 Vice President: Addie Arnold [vicepresident@bmna.org](mailto:vicepresident@bmna.org) 970.343.2825  
 Treasurer: Karen Soderberg [treasurer@bmna.org](mailto:treasurer@bmna.org) 612.710.4170  
 Secretary: Jessica Wiley [secretary@bmna.org](mailto:secretary@bmna.org) 612.374.3481

### Area Representatives

1 Liv Nielsen [liv.nielsen@bmna.org](mailto:liv.nielsen@bmna.org) 612.719.9734  
 2 Mike Tieleman [mike.tieleman@bmna.org](mailto:mike.tieleman@bmna.org) 612.600.0702  
 Susan Verrett [susan.verrett@bmna.org](mailto:susan.verrett@bmna.org) 612.377.7447  
 3 Allison Batzli [allison.batzli@bmna.org](mailto:allison.batzli@bmna.org) 612.708.2135  
 Mark Henry [mark.henry@bmna.org](mailto:mark.henry@bmna.org) 917.374.5216  
 4 Beth Franzen [beth.franzen@bmna.org](mailto:beth.franzen@bmna.org) 612.229.8123  
 Josh Nichols [josh.nichols@bmna.org](mailto:josh.nichols@bmna.org) 763.267.8905  
 Alec Werning [alec.werning@bmna.org](mailto:alec.werning@bmna.org) 507.271.8863  
 5 Beth Turnbull [beth.turnbull@bmna.org](mailto:beth.turnbull@bmna.org) 612.423.3033  
 Colleen Dhennin [colleen.dhennin@bmna.org](mailto:colleen.dhennin@bmna.org) 763.639.1868  
 Katy Kessler [katy.kessler@bmna.org](mailto:katy.kessler@bmna.org) 952.289.5430  
 6 Drew Quirk [drew.quirk@bmna.org](mailto:drew.quirk@bmna.org) 612.770.4984  
 Haven Stephens [haven.stephens@bmna.org](mailto:haven.stephens@bmna.org) 651.208.4517  
 7 Anne Hartman [anne.hartman@bmna.org](mailto:anne.hartman@bmna.org) 612.257.0069  
 Steve Harvey [steve.harvey@bmna.org](mailto:steve.harvey@bmna.org) 612.374.3613  
 8 OPEN  
 9 Carol Chapman [carol.chapman@bmna.org](mailto:carol.chapman@bmna.org) 952.209.2960  
 Doris Evans [doris.evans@bmna.org](mailto:doris.evans@bmna.org)  
 Michael Scott [michael.scott@bmna.org](mailto:michael.scott@bmna.org) 612.220.2916

### Emeritus Board Members:

Christopher Etz [christopher.etz@bmna.org](mailto:christopher.etz@bmna.org) 612.378.2987  
 Vida Ditter [vida.ditter@bmna.org](mailto:vida.ditter@bmna.org) 612.374.1481  
 Joanne Michalec [joanne.michalec@bmna.org](mailto:joanne.michalec@bmna.org) 612.377.3348  
 Jay Peterson [jay.peterson@bmna.org](mailto:jay.peterson@bmna.org) 612.377.4677  
 Barry Schade [barry.schade@bmna.org](mailto:barry.schade@bmna.org) 612-203.1758  
 Kevin Thompson [kevin.thompson@bmna.org](mailto:kevin.thompson@bmna.org) 612.296.5409

### Bugle Corps

Editor  
 JoEllyn B. Jolstad 612.377.8968  
[bugle@bmna.org](mailto:bugle@bmna.org)

### Communications and Development Coordinator

Lynda Shaheen 612.234.7819  
[coordinator@bmna.org](mailto:coordinator@bmna.org)

### Events Coordinator

Patty Wycoff  
 612-239-1710  
[events@bmna.org](mailto:events@bmna.org)

### Police Liaison CCP/SAFE

Shannon McDonough  
 612.398.4707  
[shannon.mcdonough@minneapolismn.gov](mailto:shannon.mcdonough@minneapolismn.gov)

### Advertising

Deryck Jolstad 612-377-8968  
[advertising@bmna.org](mailto:advertising@bmna.org)

### Mailing Address

2915 Wayzata Blvd.  
 Minneapolis, MN 55405-2145

### Drop Off Box

Bryn Mawr Market,  
 behind the counter

### Webmaster

Jeremy Staffeld 906.361.1595  
[webmaster@bmna.org](mailto:webmaster@bmna.org)



## Want Ads

Rates: \$4.50 minimum (4 lines, approx. 40 characters per line), \$5.00 per additional line. FREE ads for lost, found, free items, pets & youth ads. **Due Date:** 20th of preceding month. **Instructions:** No ads over the phone please or accepted without payment. Drop off in the Bugle Box at the Bryn Mawr Market or email [bugle@bmna.org](mailto:bugle@bmna.org).

Be sure to check references, State Agencies, BBB, etc. and inquire about bonding when using any new service.

### SERVICES

**BLUE SPRUCE ECO-FRIENDLY CLEANING COMPANY.** Owner does all work. A+ BBB rating. Thorough, dependable cleaning for 30+ years. \$20 off first two recurring cleanings. 763-498-2638. [www.housecleaningminneapolis.com](http://www.housecleaningminneapolis.com)

**CONCRETE/BRICK/STONE/MASONRY:** Repair or New - foundations, driveways, sidewalks & steps, garage slabs, also kitchens & bathrooms. Call Gary 651-423-6666.

Need a bike tune-up? Josh Nichols (Area 4) and Benjamin Lester (Area 6) want to help get you ready to ride, with nice weather around the corner. Email [josh.nichols@bmna.org](mailto:josh.nichols@bmna.org) and [bikes@bnlstr.com](mailto:bikes@bnlstr.com) to set up a spring tune-up, repair, flat tire fix, etc. As payment, we'd ask that people pick a trip that they would normally drive and bike it at least once to pay for the labor.

### SNOW, SHRUB, TREE, LAWN.

Premier Lawn & Snow, Inc. providing reliable snow removal, lawn care, tree and shrub trimming with quality results for SW Minneapolis since 1987. For prompt estimate call or text Dennis (952) 545-8055.

### YOUTH SERVICES

LOOKING FOR A PET SITTER? You can email me, at [emilymw2004@gmail.com](mailto:emilymw2004@gmail.com) if you'd like me to clarify anything or figure out the details.

## Copy deadline for the August issue is July 20!

Display & Classified Ads are due July 20th. Ads must be pre-paid & camera ready. Call Deryck Jolstad at (612) 377-8968 or [djolstad@msn.com](mailto:djolstad@msn.com) for rates.



## Bugle also available at [bmna.org](http://bmna.org)

A reminder that in addition to being delivered to your doorstep, the Bryn Mawr Bugle is available online at [bmna.org](http://bmna.org). Click on the Bugle logo on the home page to read the current edition or go under the 'Bugle' tab to see past editions and to learn more about advertising rates and submission deadlines.

The Bryn Mawr Bugle is an open-forum newspaper published by the Bryn Mawr Neighborhood Association. Content is based entirely on volunteer submissions which may be emailed to [bugle@bmna.org](mailto:bugle@bmna.org). Articles will be printed at the discretion of the Editor. The Bryn Mawr Bugle is published every month except January. Distribution is free to Bryn Mawr residents; copies are also available at the Bryn Mawr Market, Bryn Mawr Mobil and Cuppa Java. Opinion articles represent the opinion of the writer, not necessarily those of the Bryn Mawr Neighborhood Association or the Editor of the Bugle. Submissions may be edited for length without altering the letter writer's message. Under the law, writers, like journalists, may not commit libel, be obscene, reveal names of juveniles accused of crime, invade personal space, or incite to riot.

**GENERAL ADVERTISING POLICIES:** All ad copy is subject to approval by the paper, which reserves the right to reject or request changes to an ad. Ad placement does not imply endorsement by the BMNA. The advertiser, not the paper, is responsible for the truthful content of the ad. Readers use service/product providers at their own risk and are solely responsible for checking references, state agencies, BBB, etc.

## COORDINATOR CORNER

Lynda Shaheen

Communications & Development Coordinator

612.234.7819 • [coordinator@bmna.org](mailto:coordinator@bmna.org)

Contact for BMNA Meeting information & Spiritwear Sales

Sign up for email list at [BMNA.org](http://BMNA.org)